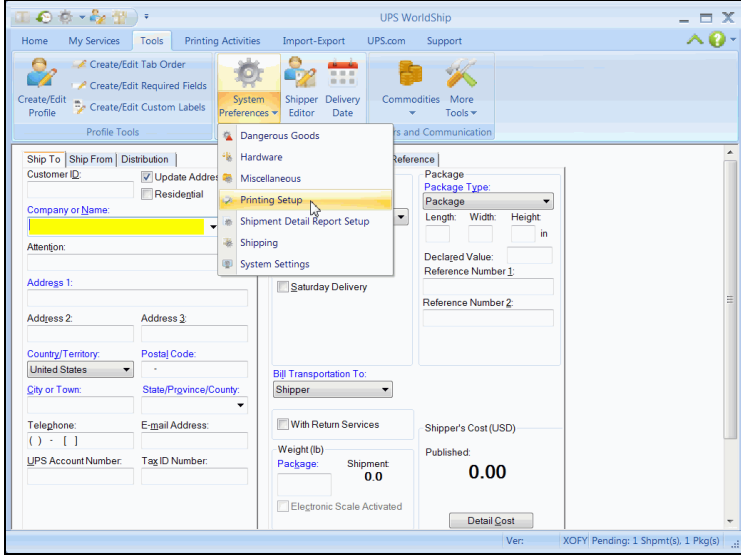
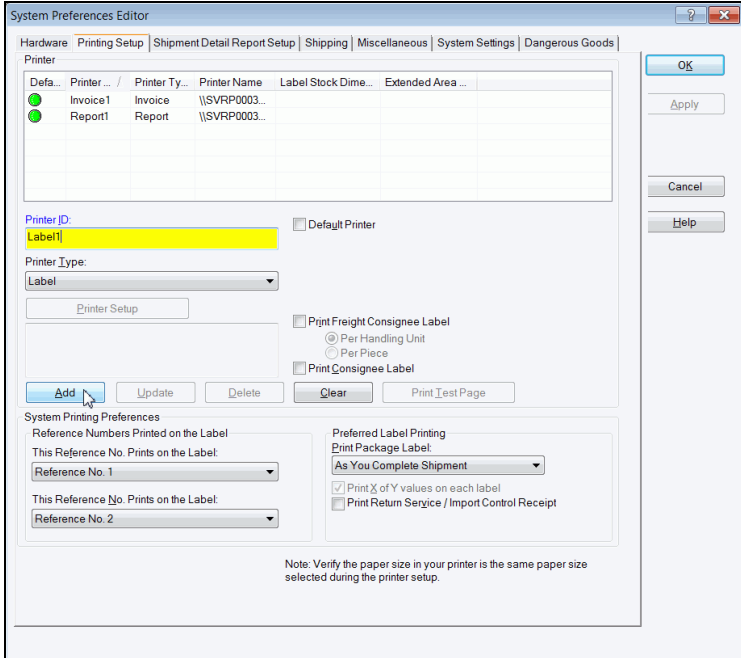




To set the label stock configuration:

Step	Window (if available)
<p>1. On the Tools tab, select System Preferences and then Printing Setup.</p>	
<p>2. The Printing Setup tab appears. The Printer grid shows all the current printers.</p> <p>To set the label stock configuration for a new Printer ID:</p> <ul style="list-style-type: none"> Type an ID in the Printer ID box. Click the Add button. The Label Printer Setup window appears. Click the Change Label Printer button. The Printer Selection window appears. Under Printers, select the printer to assign to the Printer ID. Click the Select button. Continue with step 3. 	



The image shows two overlapping Windows dialog boxes. The top dialog is titled "Label Printer Setup" and contains the following elements:

- Printer:** A text field with the value "Click Change Label Printer Button". To its right is an "Apply" button. Below the text field is a "Change Label Printer" button.
- Label Configuration:** A section containing two dropdown menus: "Label Stock Dimensions:" and "Extended Area Usage:" (set to "(None)").
- Generic Thermal Printer:** A checkbox that is currently unchecked.
- Buttons:** "Apply" and "Cancel" buttons are located on the right side.

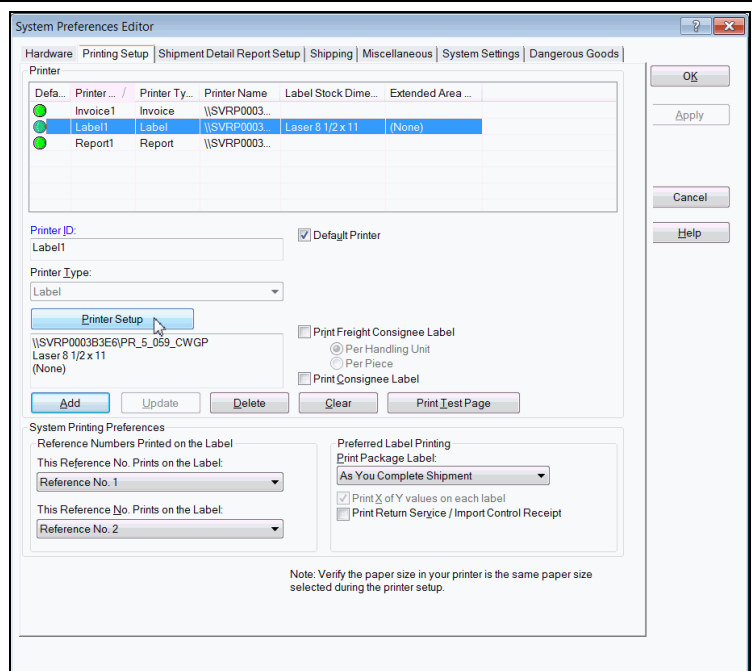
The bottom dialog is titled "Printer Selection" and contains the following elements:

- Printers:** A list box containing the following printer names:
 - \\SVRFP0003B3E6\Pq_5hp500Plotter
 - \\SVRFP0003B3E6\Pq_5LenierLD075
 - \\SVRFP0003B3E6\PR_5_059_CWGP (highlighted)
 - \\SVRFP0003B3E6\PR_5_134_WGP
 - Adobe PDF
 - Fax
 - Microsoft Office Document Image Writer
 - Microsoft Office Live Meeting Document Writer
 - Microsoft XPS Document Writer
 - UPS Thermal 2844
- Buttons:** "Select", "Cancel", and "Add Printer" buttons are located on the right side.



To set the label stock configuration for an existing label printer:

- Select the printer in the Printer grid.
- Click the Printer Setup button.



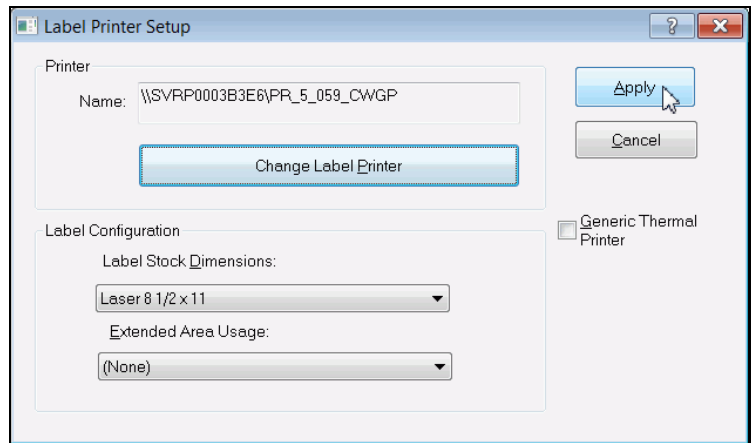
3. The Label Printer Setup window appears and shows your current setup for the selected printer.

In the Label Printer Setup window:

- Under Printer, verify that the correct printer appears in the Name box.
- Under Label Configuration, click the down arrow in the Label Stock Dimensions box and select the desired label stock dimension (see definitions under Notes).
- Click the down arrow in the Extended Area Usage box and select the desired extended area usage (see definitions under Notes).

Tip: The Extended Area Usage box is active only if you select Thermal 4x8 or 4x8¼, Laser 8½ x 11, and Laser 8½ x 11 (2 Labels per Page) in the Label Stock Dimensions box.

- Click the Apply button.





4. The Printing Setup tab in the System Preferences Editor window appears again.

On the Printing Setup tab:

- Verify that Label Stock Dimensions shows the desired dimension and Extended Area Usage shows the correct usage for the selected printer.
- Select the following check boxes as needed: Print Shipment Doc Label, Print Package Doc Label, Print Freight Doc Label, Print Freight Consignee Label, and Print Consignee Label.
- Click the Print Test Page button to make sure your printer is correctly set up. If the label does not print correctly, recheck your configuration.
- Click the Update button.
- Under Reference Numbers Printed on the Label, click the down arrow in each This Reference No. Prints on the Label box and select a reference number to appear on the label. These options apply to all label printers.
- Under Preferred Label Printing, click the down arrow in the Print Package Label box and select when you want to print the package labels and then select the Print X of Y Values on each Label and the Print Return Service/Import Control Receipt check boxes as needed. These options apply to all label printers.

The screenshot shows the 'System Preferences Editor' window with the 'Printing Setup' tab selected. The window has a menu bar with options: Hardware, Printing Setup, Shipment Detail Report Setup, Shipping, Miscellaneous, System Settings, and Dangerous Goods. Below the menu bar is a table of printers:

Defa...	Printer ...	Printer Ty...	Printer Name	Label Stock Dime...	Extended Area ...
	Invoice1	Invoice	\\SVRP0003...		
	Label1	Label	\\SVRP0003...	Laser 8 1/2 x 11	(None)
	Report1	Report	\\SVRP0003...		

Below the table, the 'Label1' printer is selected. The 'Printer ID' field contains 'Label1' and the 'Default Printer' checkbox is checked. The 'Printer Type' is set to 'Label'. The 'Printer Setup' button is visible. The printer path is '\\SVRP0003B3E6\PR_5_059_CWGP' and the paper size is 'Laser 8 1/2 x 11 (None)'. The 'Print Freight Consignee Label' checkbox is checked, and the 'Print Consignee Label' checkbox is also checked. The 'Print Package Label' radio button is selected under 'Per Handling Unit'. The 'Print Test Page' button is also visible.

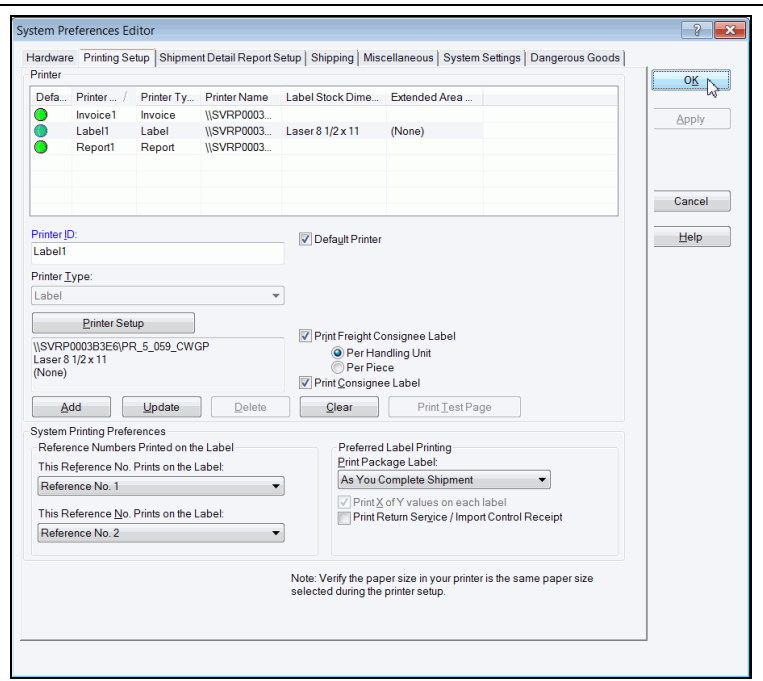
The 'System Printing Preferences' section includes:

- 'Reference Numbers Printed on the Label': Two dropdown menus for 'This Reference No. Prints on the Label' are set to 'Reference No. 1' and 'Reference No. 2'.
- 'Preferred Label Printing': The 'Print Package Label' dropdown is set to 'As You Complete Shipment'. The 'Print X of Y values on each label' checkbox is checked, and the 'Print Return Service / Import Control Receipt' checkbox is unchecked.

A note at the bottom states: 'Note: Verify the paper size in your printer is the same paper size selected during the printer setup.'



5. Once you are satisfied with your label printing configuration, click the OK button.



Notes:

- The following label stock dimensions are available:
 - ✓ **Thermal 4x6 or 4x6¼** – Use this size to print standard labels.
 - ✓ **Thermal 4x8 (Perforated)** – Use this size to print document labels.
 - ✓ **Thermal 4x8¼ (Perforated)** – Use this size to print document labels with Warsaw text, which will appear on the address label portion.
 - ✓ **Thermal 4x8 or 4x8¼** – Use this size if you want to use an extended area to customize your labels (see choices below).
 - ✓ **Thermal 4x11** – Use this size to print UPS World Ease™ labels.
 - ✓ **Laser 8½ x 11** – Use this size to print one label on each laser sheet. This stock size also permits you to use an extended area to customize your labels (see choices below).
 - ✓ **Laser 8½ x 11 (2 Labels per Page)** – Use this size to print the two labels on each laser sheet. For this dimension, you must select As You Complete Shipment for your preferred label printing option. This stock size also permits you to use the extended area to customize your labels (see choices below).
 - ✓ **Laser 8½ x 11 (4 Labels per Page)** – Use this size to print four labels on each laser sheet. For this dimension, you must select As You Complete Shipment for your preferred label printing option.
 - ✓ **Laser A4 210 x 297** – Use this size if you want to use an extended area to customize your labels with reference numbers or a generic barcode.



- The following extended area usages are available for Thermal 4x8 and 4x8¼:
 - ✓ **(None)** to print nothing in the extended area of the label.
 - ✓ **Generic Barcode** to print a customized reference number barcode in the lower 2-inch area of the label.
 - ✓ **Preprinted Label Stock** to use your own label stock with a preprinted company logo in the top 2-inch area of the label.
 - ✓ **SSCC-18 Barcode** to print in the lower 2-inch area of the label.
 - ✓ **Graphical Image (Company Logo)** to use your own graphical image in the top 2-inch area of the label.
 - ✓ **Reference Numbers** to print one to five reference numbers in the lower 2-inch area of the labels.
- The following extended area usages are available for Laser 8½ x 11 and Laser 8½ x 11 (2 Labels per Page):
 - ✓ **(None)** to print nothing in the extended area of the labels.
 - ✓ **Reference Numbers** to print one to five reference numbers in the lower 2-inch area of the labels.
 - ✓ **Generic Barcode** to print a customized reference number barcode in the lower 2-inch area of the label.
- The following extended area usages are available for Laser A4 210 x 297:
 - ✓ **(None)** to print nothing in the extended area of the labels.
 - ✓ **Reference Numbers** to print one to five reference numbers in the lower 2-inch area of the labels.
 - ✓ **Generic Barcode** to print a customized reference number barcode in the lower 2-inch area of the label.