



*Transferring FedEx Ship
Manager[®] Commodity
List to **WorldShip[®]***

WorldShip

Transferring FedEx Ship Manager Commodity List to WorldShip

1. Launch **FedEx Ship Manager**.
2. In menu bar select the following: **Databases > Templates**.
3. Click **Add** in the *View Templates* window.
4. Enter the following in the *Enter Template Information* section.
 - a. Enter **COMMODITIES** as the Template ID.
 - b. Select **Export** as the Type.
 - c. Select **Commodity** as the Database.
 - d. Enter **c:\fedexcommodity.csv** as the file name.
NOTE: The file name is case sensitive and *must match exactly* or the import into WorldShip will fail.
5. Select and Check the following in the *Format* section.
 - a. Select **Delimited** as the file format.
 - b. Check **Column headers on 1st line**.
6. Click on **Add all >>** under the **Fields** section.
7. Click on **OK**.
8. Click **OK** in the *View Templates* window.
9. In the format section select the following:
Databases > File Maintenance > Export.
10. Select **COMMODITIES** from the *Template name:* drop-down menu, and then click **OK**.
NOTE: Verify the output file name is **c:\fedexcommodity.csv**.
11. Click **OK** in the *File Maintenance Export* message window.

Transferring FedEx Ship Manager Commodity List to WorldShip

12. Move **fedexcommodity.csv** to **C:\UPS\WSTD\ImpExp\Invalid**.

NOTE:

- C:\ is the default drive letter WorldShip is installed on. Change the drive letter accordingly if it was installed on a different drive letter.
- If WorldShip was installed as a LAN Admin/Remote, the path will include the shared folder name.
C:\<SharedFolder>\UPS\WSTD\ImpExp\Invalid.

13. Download the following files from the UPS website under **FedEx Ship Manager Commodity List Transfer** section:
<http://www.ups.com/content/us/en/resources/techsupport/worldship/transfer.html>.

- **FedExCommodity.dat**
Save to **C:\UPS\WSTD\ImpExp\Commod.**
- **schema.ini**
Save to **C:\UPS\WSTD\ImpExp\Invalid.**

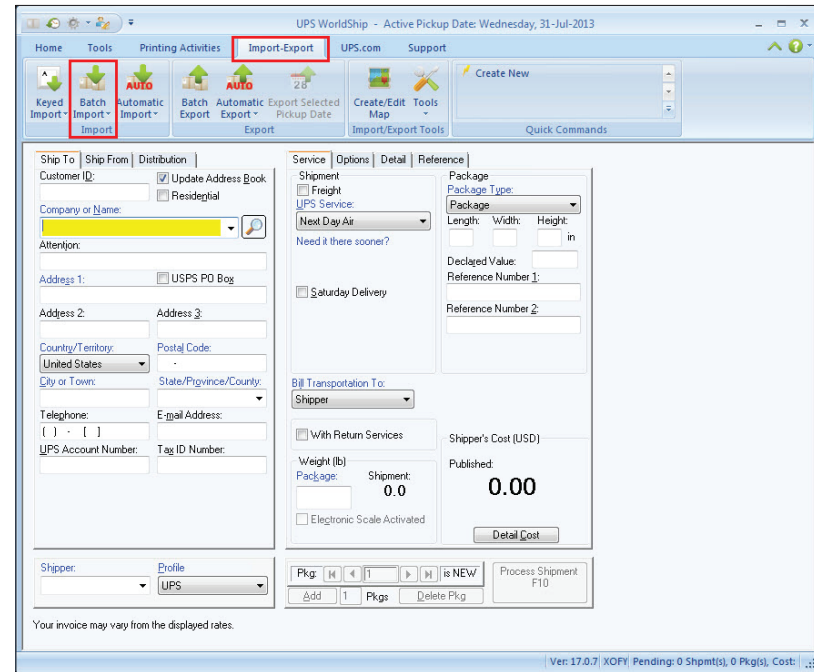
FedEx Ship Manager® Commodity List Transfer			
Download Transfer Guides			
File Name	File Format	Date Created	Download
Guide to Transfer FedEx Ship Manager Commodity List to UPS WorldShip		10/16/2009	Download
FedExCommodity.dat		03/12/2009	Download
schema.ini		03/12/2009	Download

Transferring FedEx Ship Manager Commodity List to WorldShip

14. Launch **WorldShip**.

15. Select the **Import-Export** tab.

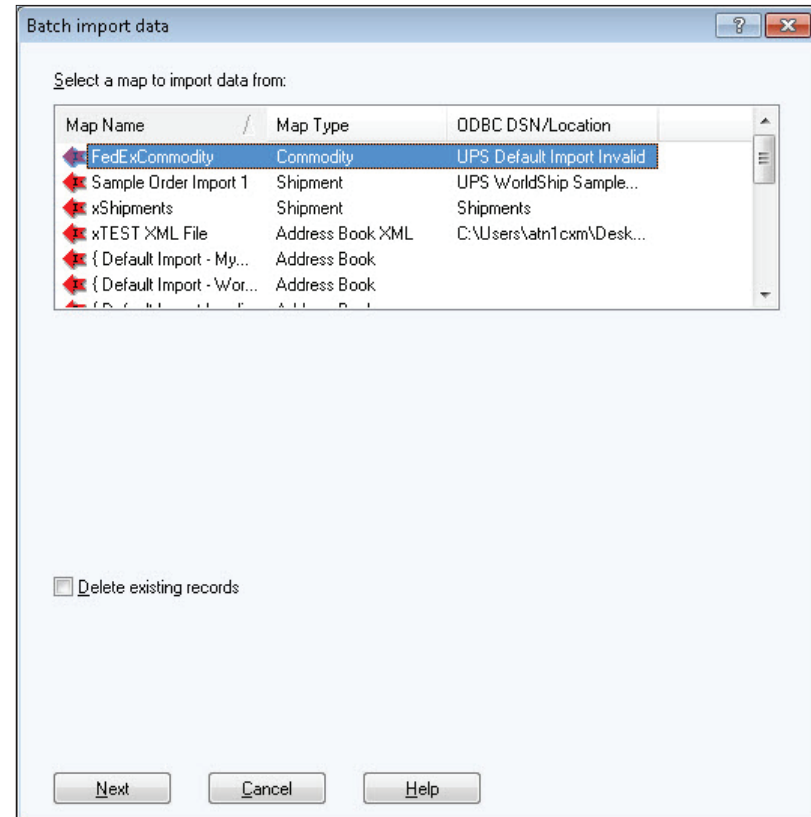
16. Click on **Batch Import**.



Transferring FedEx Ship Manager Commodity List to WorldShip

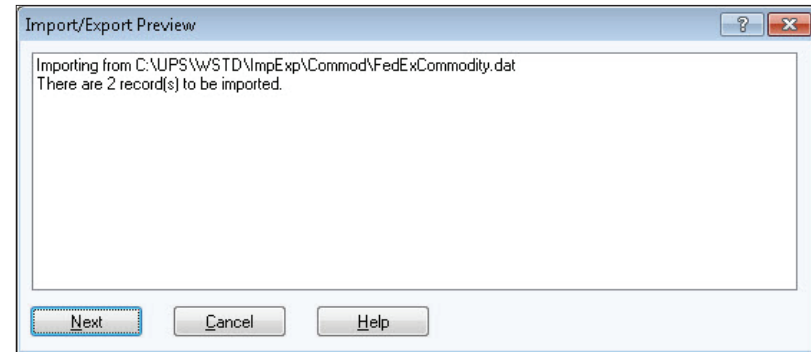
17. In the *Batch import data* window highlight the Map Name — **FedExCommodity**.

18. Click **Next**.



Transferring FedEx Ship Manager Commodity List to WorldShip

19. Click **Next** in the *Import/Export Preview* window.



20. Click **Save** when the import is complete in the *Import/Export Summary* window.

NOTE:

- Invalid records are saved to **C:\UPS\WSTD\ImpExp\Invalid\ComInv.csv**.
 - C:\ is the default drive letter WorldShip is installed on. Change the drive letter accordingly if it was installed on a different drive letter.
 - If WorldShip was installed as a LAN Admin/Remote, the path will include the shared folder name.
C:\<SharedFolder>\UPS\WSTD\ImpExp\Invalid\.
- Records can be modified from this file and re-imported using the following Map Name — **{ Default Import Invalid Records }**
Map Type — **Commodity**.

