

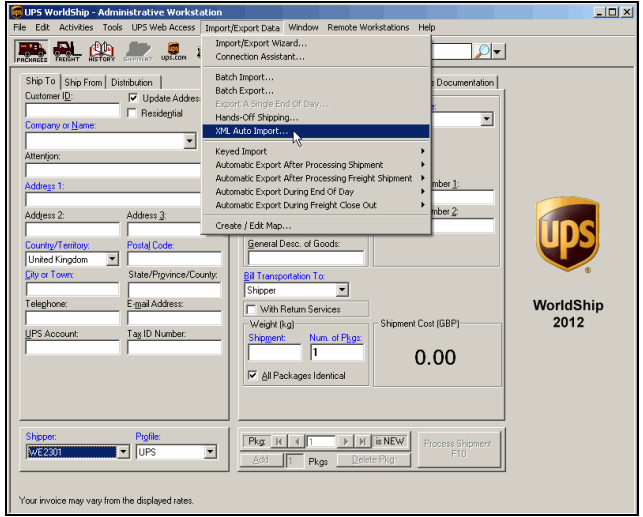
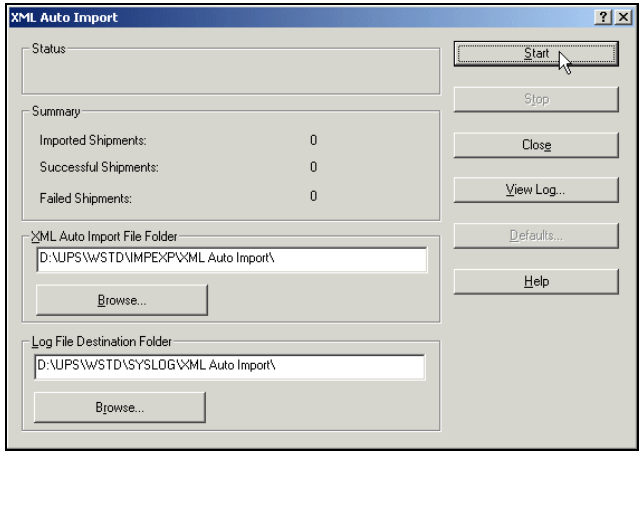

WorldShip® Auto Import Using XML



The XML Auto Import feature allows WorldShip to import and process an .xml file of shipments. Once WorldShip imports the .xml file and prints the labels, your processed .xml file is renamed, and a file containing the shipment information and tracking number is automatically created and placed in the same folder as the .xml file.

To import and process shipments using the XML Auto Import feature, you need to create your .xml file using the schema found in the following directory once you have installed WorldShip:
 \UPS\WSTD\Openshipments.xdr

After you create your .xml file, continue with the steps below:

Step	Window (if available)
<p>1. On the Import/Export Data menu, click XML Auto Import.</p>	
<p>2. The XML Auto Import window appears.</p> <ul style="list-style-type: none"> Use the default path in the XML Auto Import File Folder box, or click the Browse button and locate and select the XML directory from which to read the XML import information. <p>Note: Be sure the schema path in the .xml file indicates the location of the .xdr file.</p> <ul style="list-style-type: none"> Use the default path in the Log File Destination Folder box, or click the Browse button and locate and select a directory in which to save a log file containing information on the processing of successful and/or failed shipments. Click the Start button. 	
<p>3. WorldShip displays a reminder to check your print stock.</p> <ul style="list-style-type: none"> Check your print stock. Click the OK button. 	

WorldShip® Auto Import Using XML

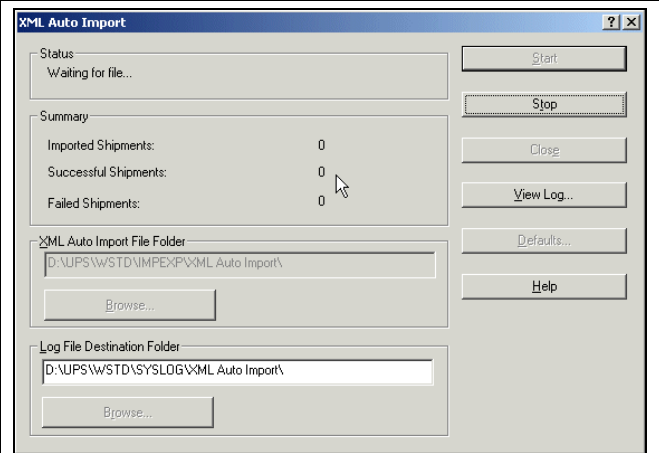


4. WorldShip polls the UPS/WSTD/ImpExp/XML Auto Import folder, processes any new XML files, and renames the file extensions to “xxx.” After processing each shipment, a file is created to replicate the XML shipment, and the process status is logged.

Monitor your XML Auto Import session. Under Summary, view cumulative totals of shipments that process successfully and shipments that fail validation during the current session.

Tips:

- When you start a new XML Auto Import session, the totals show zero.
- As new shipments are imported and processed, WorldShip updates the summary totals to show the progress of the current session.
- If you stop the current session and then begin a new session, the totals show zero.

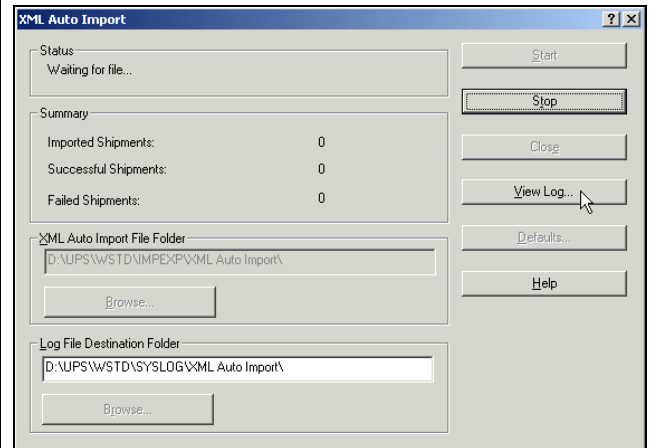


5. To view the XML Auto Import Log:

Click the View Log button.

Tips:

- If you click the View Log button during a session, the log file for the current session appears.
- If you click the View Log button before or after a session, the log file for the last session appears.



6. To stop the current XML Auto Import session:

Click the Stop button.

Note: When WorldShip asks you if you want to stop the current XML Auto Import session, click the Yes button.

