

UPS WorldShip™ Upgrade on a Workgroup Remote

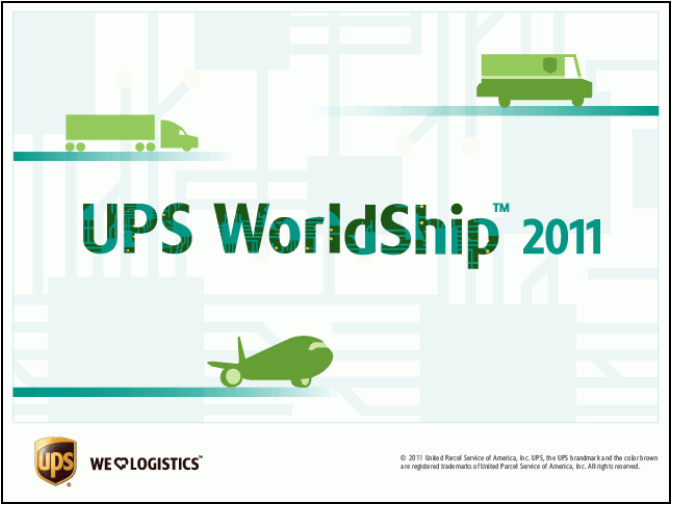


PRE-INSTALLATION INSTRUCTIONS:

- Install UPS WorldShip on the Workgroup Admin.
- Temporarily disable any virus scan software that you may have installed.

INSTALLATION INSTRUCTIONS:

Follow these steps to install WorldShip on a Workgroup Remote from a network share drive or the WorldShip CD:

Step	Window (if available)
<p>1. If upgrading from a network share drive, browse to and double-click \UPS\WSTD\Remote\Install\Disk1\Setup.exe.</p> <p>If upgrading from the WorldShip CD, insert the WorldShip CD into the CD-ROM drive. The installation should begin automatically.</p> <p>If the installation does not begin automatically, use Microsoft® Windows Explorer to navigate to the CD-ROM drive and double-click Setup.exe.</p>	<p>None</p>
<p>2. The Initializing WorldShip Setup Program message appears and then the WorldShip splash screen appears.</p>	<div data-bbox="813 1083 1484 1199" style="border: 1px solid black; background-color: #cccccc; padding: 5px; text-align: center;"> Initializing WorldShip Setup Program... </div> <div data-bbox="813 1226 1484 1730" style="border: 1px solid black; padding: 10px;">  <p>The splash screen features a light blue background with a stylized industrial or warehouse scene. It includes icons for a green UPS truck, a green UPS van, and a green UPS airplane. The text 'UPS WorldShip™ 2011' is prominently displayed in the center. At the bottom left is the UPS logo and the text 'WE LOGISTICS'. At the bottom right is a small copyright notice: '© 2011 United Parcel Service of America, Inc. UPS, the UPS brandmark and the color brown are registered trademarks of United Parcel Service of America, Inc. All rights reserved.'</p> </div>

UPS WorldShip™ Upgrade on a Workgroup Remote



3. If upgrading from a network share drive, skip to step 4.

If upgrading from the WorldShip CD, the Language Selection window appears.

Click the desired language.

Note: You can install WorldShip using any of these languages regardless of your country/territory of origin or installed operating system language.



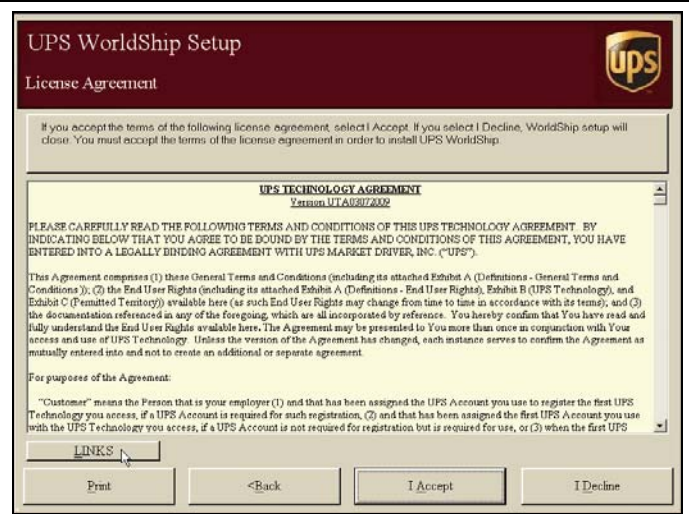
4. The Welcome to the UPS WorldShip Setup Program window appears.

- Review the information.
- Click the Next button.



5. The License Agreement window appears.

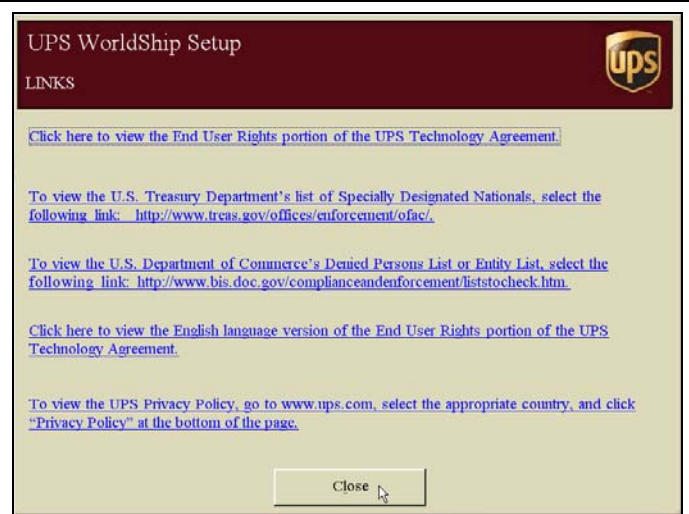
- If you would like to visit various Web sites for pertinent United States regulations, End User Rights, and UPS Privacy Policy, click the Links button and continue with step 6.
- If you do not want to click the Links button, skip to step 7.



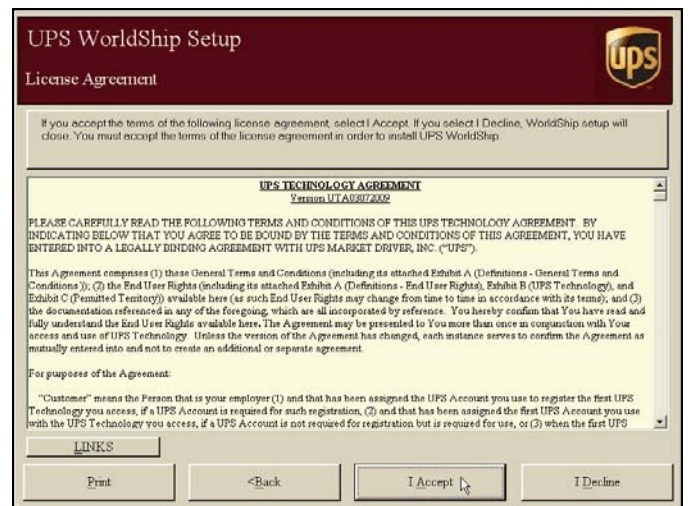
UPS WorldShip™ Upgrade on a Workgroup Remote



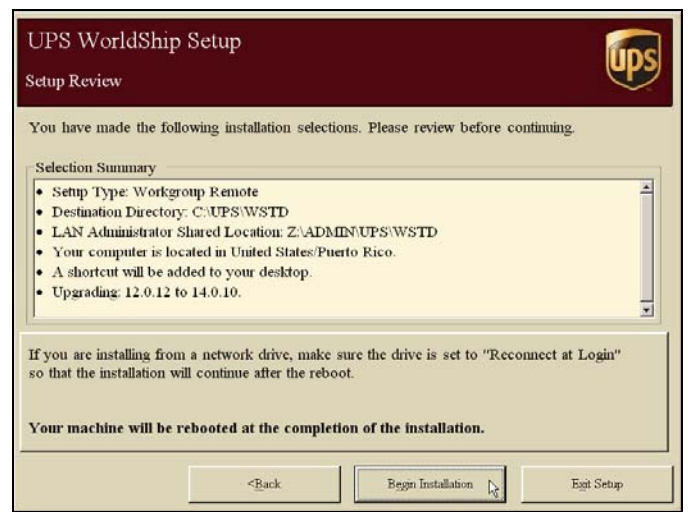
6. The Links window appears.
- Click the link of your choice.
 - When done, click the Close button.



7. The License Agreement window appears.
- Review the agreement.
 - Click the I Accept button.
- Note: If you click the I Decline button, the installation exits.


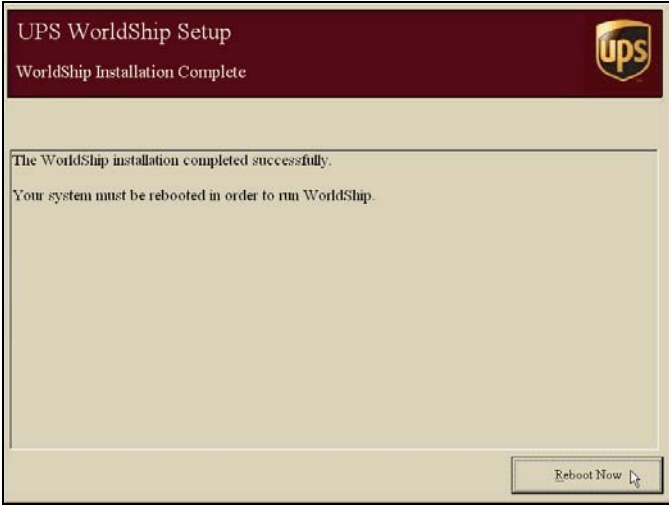


8. The Setup Review window appears and summarizes your selections.
- Verify your selections.
- Note: If you need to change your selections, click the Back button.
- Click the Begin Installation button.



UPS WorldShip™ Upgrade on a Workgroup Remote

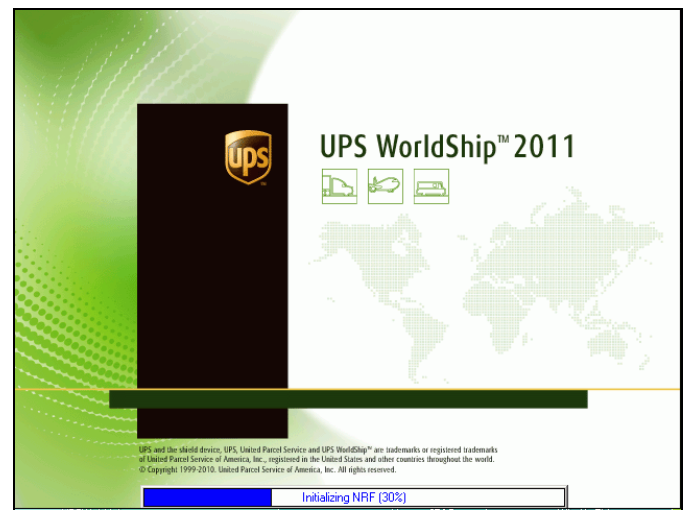


<p>9. During installation, the Installation Progress window appears.</p> <p>Note: Do not attempt to restart your workstation.</p> <p>Monitor the progress of the installation.</p>	
<p>10. When installation completes, the WorldShip Installation Complete window appears.</p> <p>Click the Reboot Now button.</p>	
<p>11. Your workstation reboots.</p> <p>Log in and enter your password as needed.</p>	<p>None</p>

UPS WorldShip™ Upgrade on a Workgroup Remote



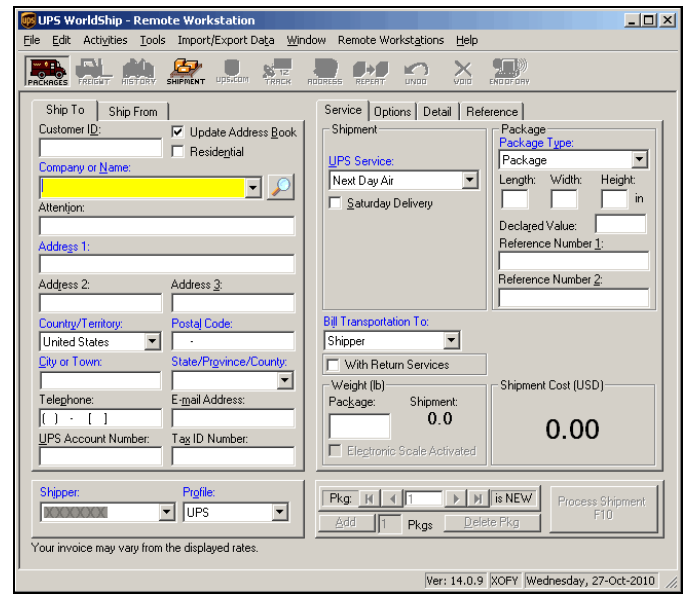
12. WorldShip starts. During start up, the progress appears on the WorldShip splash screen.



13. The Shipping window appears, and if you selected the Show Help Topic at Startup system preference in your previous WorldShip version, the Welcome to UPS WorldShip help topic appears.

Begin processing shipments.

For further information on using WorldShip 14.0, see the WorldShip 14.0 User Guides.



UPS WorldShip™

Upgrade on a Workgroup Remote

