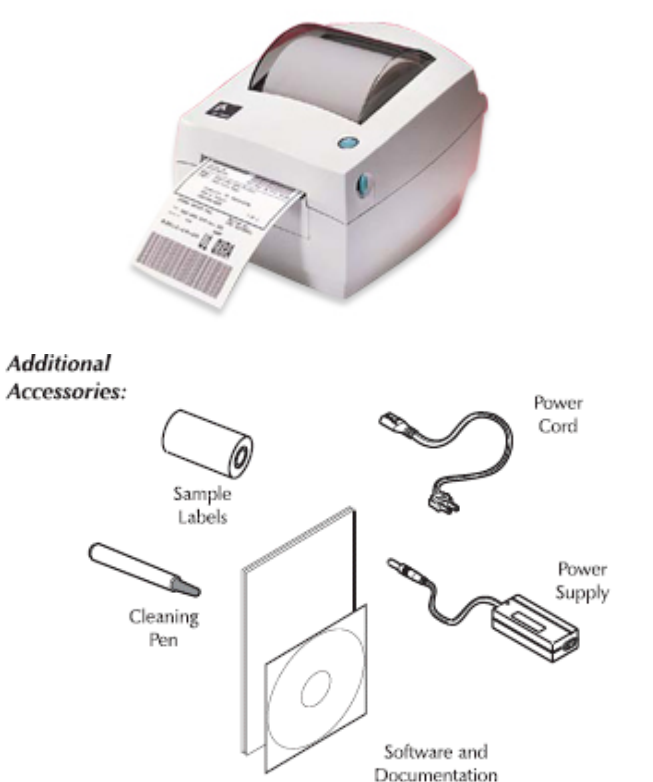
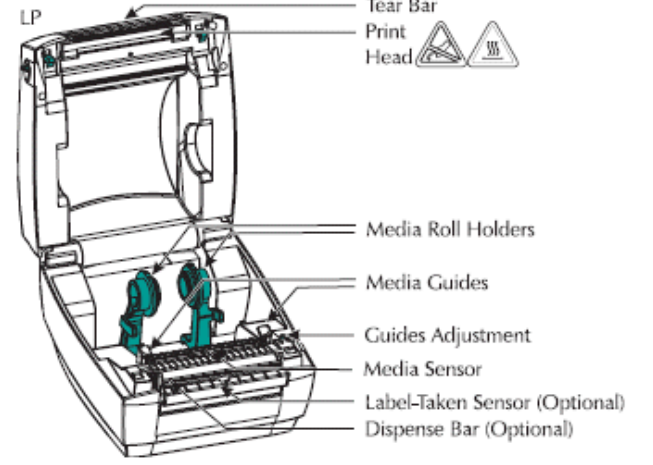


# WorldShip® Install a Thermal Label Printer



The illustrations for the installation of a thermal label printer use the Eltron Zebra Thermal Label Printer LP2844 (UPS Thermal Label Printer 2844). While there are some physical differences among the various other UPS supported thermal label printers, you can operate all printers using the same procedures.

**To unpack and connect a printer:**

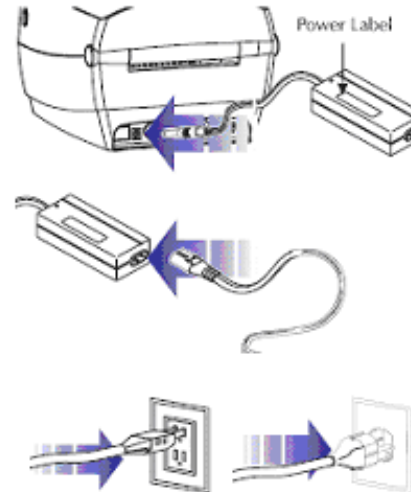
Step	Sample
<p>1. Unpack the printer and confirm that all the accessories are present.</p>	 <p><b>Additional Accessories:</b></p> <ul style="list-style-type: none"> <li>Sample Labels</li> <li>Cleaning Pen</li> <li>Power Cord</li> <li>Power Supply</li> <li>Software and Documentation</li> </ul>
<p>2. Verify that all the internal pieces are included.</p> <p><b>Note:</b> The Print Head includes a heat advisory and should not be touched when the printer is on.</p>	 <ul style="list-style-type: none"> <li>LP</li> <li>Tear Bar</li> <li>Print Head</li> <li>Media Roll Holders</li> <li>Media Guides</li> <li>Guides Adjustment</li> <li>Media Sensor</li> <li>Label-Taken Sensor (Optional)</li> <li>Dispense Bar (Optional)</li> </ul>

# WorldShip® Install a Thermal Label Printer



### 3. Attach the power supply to the printer, as follows:

- Plug in the power module.
- Plug in the power cord.
- Plug power cord into a suitable AC outlet. Make sure that the plug is not taut and the power cord connector is seated securely in the AC outlet.

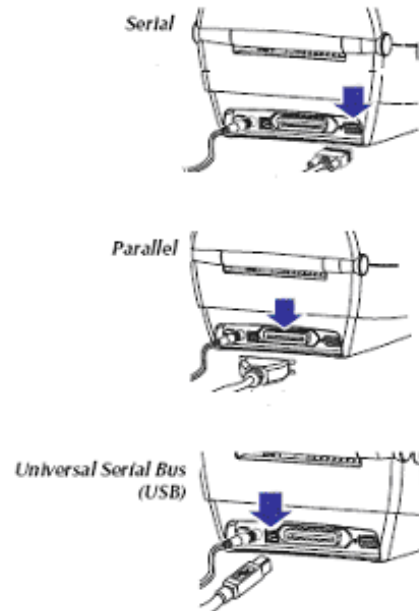


### 4. Do the following:

- Identify the printer communication connection in the back of the printer as a serial, parallel, or USB connection.

**Note:** A serial connector fits a 9 pin port; a parallel connector fits a 25 pin port; and a USB connector fits a dual slot port.

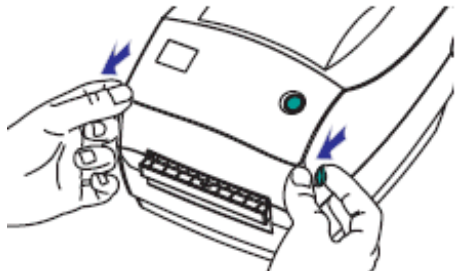
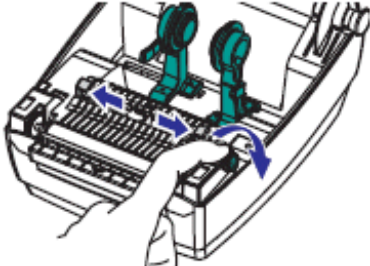
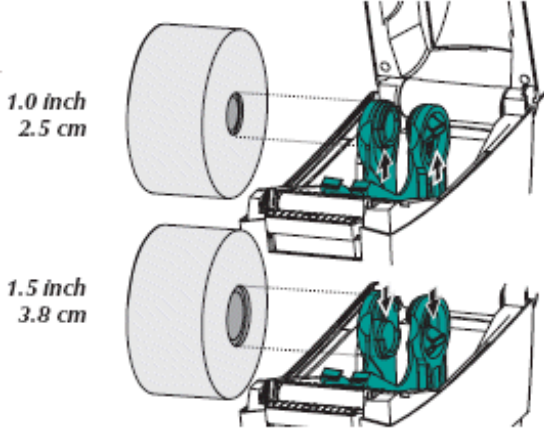
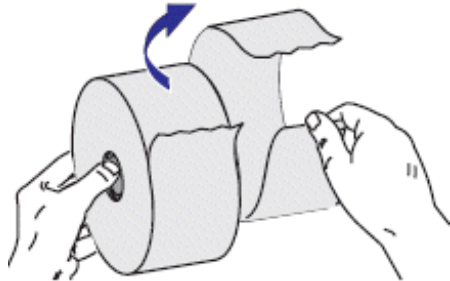
- Connect the printer cable to the communication port.



# WorldShip® Install a Thermal Label Printer



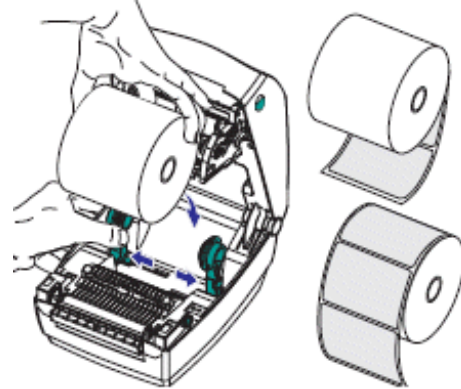
**To load labels in the printer:**

Step	Sample
<p>1. Open the printer cover by clicking the adjacent blue guides (tabs) forward with both hands.</p>	
<p>2. With the cover open:</p> <ul style="list-style-type: none"> <li>• Click the guides at the sides of the printer.</li> <li>• Slide the left guide to the left and the right guide to the right.</li> </ul>	
<p>3. Adjust the holders to the preferred width and size of the label roll.</p> <p><b>Note:</b> Label rolls come in 1.0 inch (2.5cm) or 1.5 inch (3.8cm).</p>	
<p>4. Tear the first length of labels off the roll and roll the label so that it opens upward.</p> <p><b>Note:</b> Avoid dragging adhesive or dirty labels between the print head and platen, which may damage these parts and is not covered in the printer warranty.</p>	

# WorldShip® Install a Thermal Label Printer

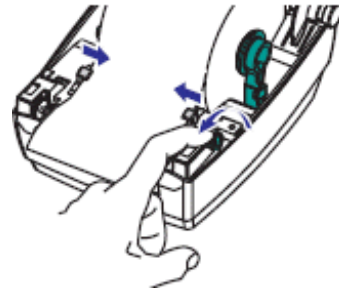


5. Place the label roll into the printer with the labels flowing forward and loading from under the roll.

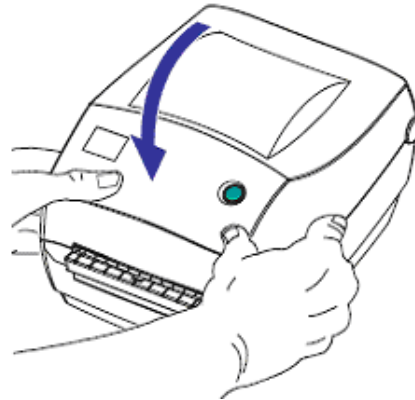


6. Press the label guide to bring the labels forward to just over the printer head, and then close the guides to the width of the media.

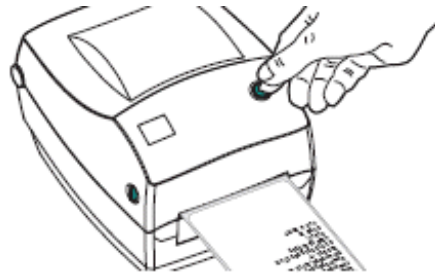
**Note:** Some printer models come with an optional Label-Taken Sensor and Dispenser Bar. These features make it easier to load and adjust the label roll.



7. Close the printer cover.



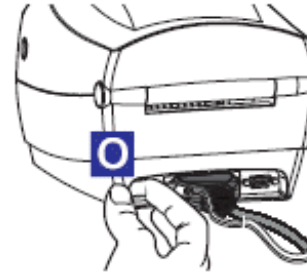
8. Press the Feed button to bring the label roll forward to a preferred length and placement of the print head.



# WorldShip® Install a Thermal Label Printer



9. Turn the printer power on.



To install the printer driver:

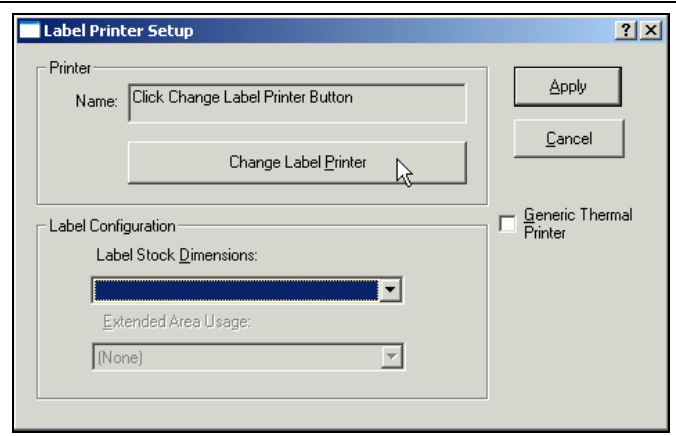
Step	Window (if available)
<p>1. On the Tools menu, click System Preferences Editor.</p>	
<p>2. The System Preferences Editor window appears.</p> <ul style="list-style-type: none"> <li>• Click the Printer Setup tab.</li> <li>• Click the Label Printer Setup button.</li> </ul>	

# WorldShip® Install a Thermal Label Printer



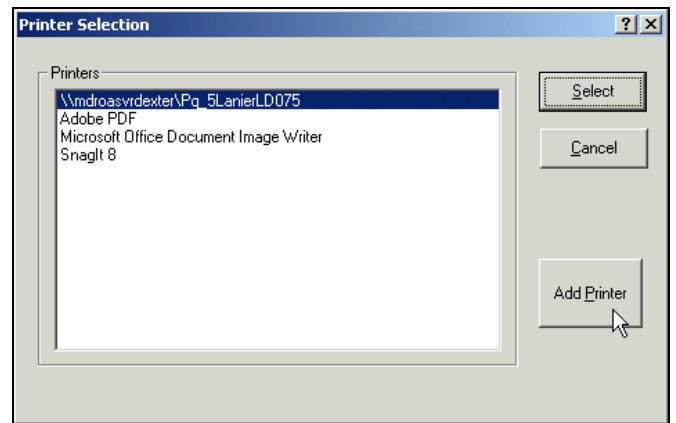
3. The Label Printer Setup window appears.

Under Printer, click the Change Label Printer button.



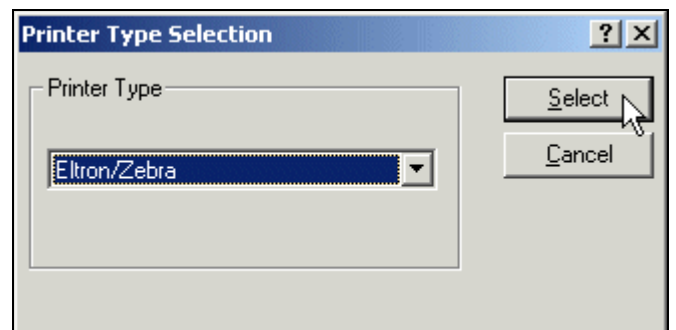
4. The Printer Selection window appears.

- To add a new printer, click the Add Printer button and continue with step 5.
- To begin using a previously installed printer, select it in the Printers box, click the Select button, and skip to step 13.



5. The Printer Type Selection window appears.

- Click the down arrow and select the printer type (that is, Eltron/Zebra or Other).
- Click the Select button.
- Continue to the appropriate step based on your selection:
  - Eltron/Zebra – step 6.
  - Other – step 11.

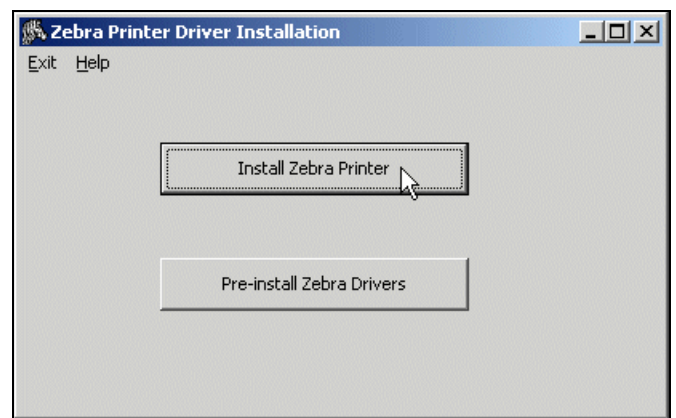


# WorldShip® Install a Thermal Label Printer



6. The Zebra Printer Driver Installation window appears.

Click the Install Zebra Printer button.



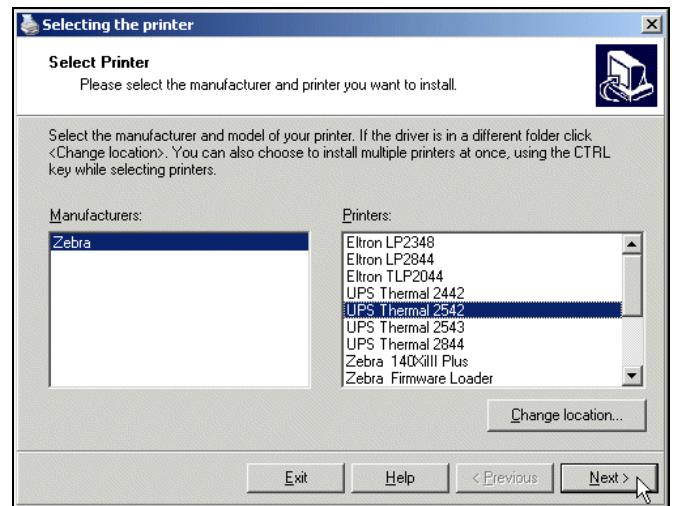
7. The Selecting the Printer window appears and shows the manufacturers and printers that are available.

- Select the printer manufacturer in the Manufacturers box.
- Select the desired printer model in the Printers box.

**Tip:** Use the scroll bar as needed to find your printer model.

- Click the Next button.

**Important Note for Zebra ZP 450 Label Printer Users:** Users of the ZP 450 Printer must install and configure the printer driver for Zebra ZP Series-200 dpi.

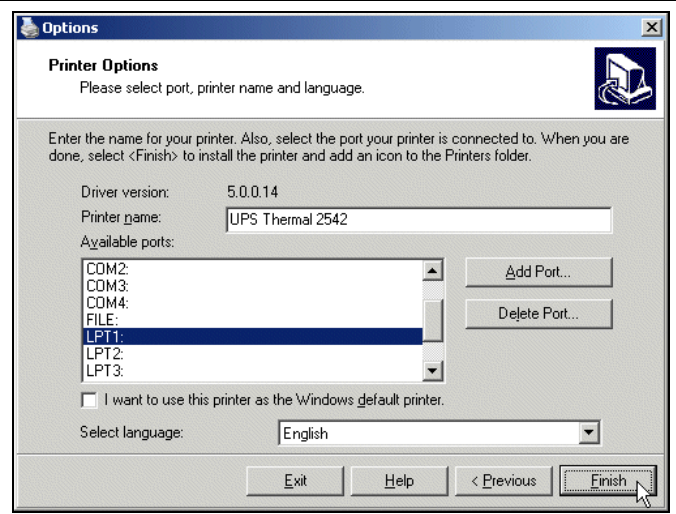


8. The Options window appears.

- Select the communication port for your printer connection.

**Tip:** Serial ports use COM1 through COM4, and parallel ports use LPT1 through LPT3.

- Click the down arrow in the Select Language box and select a language.
- Click the Finish button.

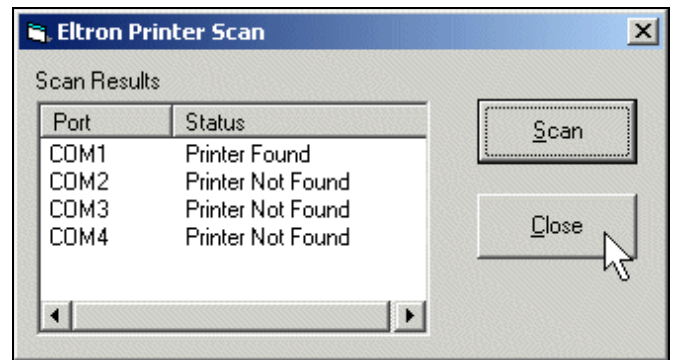
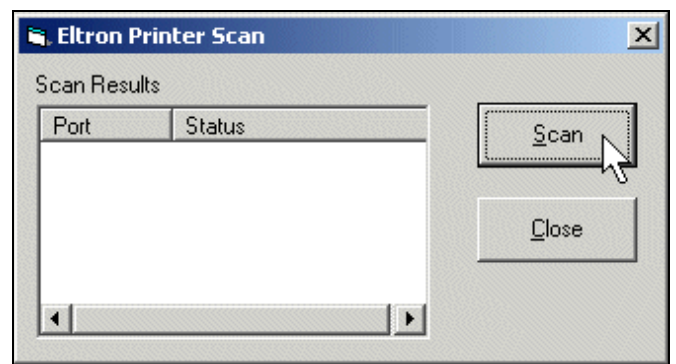


# WorldShip® Install a Thermal Label Printer



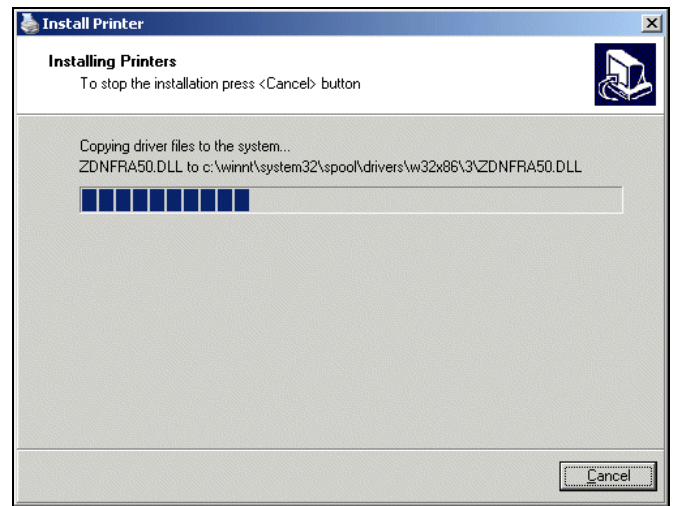
**Note:** If you do not know the communication port for your printer connection, the UPS Support Utility provides a feature to scan and indicate the communication port, as follows:

- Click the Start button on the Windows taskbar, point to Programs and then to UPS, and click UPS WorldShip Support Utility. The User Diagnostic Support window appears.
- On the Tools menu, click Eltron Printer Scan. The Eltron Printer Scan window appears.
- Click the Scan button. The status of each port appears, and the status of the correct port shows Printer Found.
- Note which port shows Printer Found, click the Close button, and continue with step 12 above.



9. The Install Printer window appears and shows the installation progress.

Monitor the installation progress.

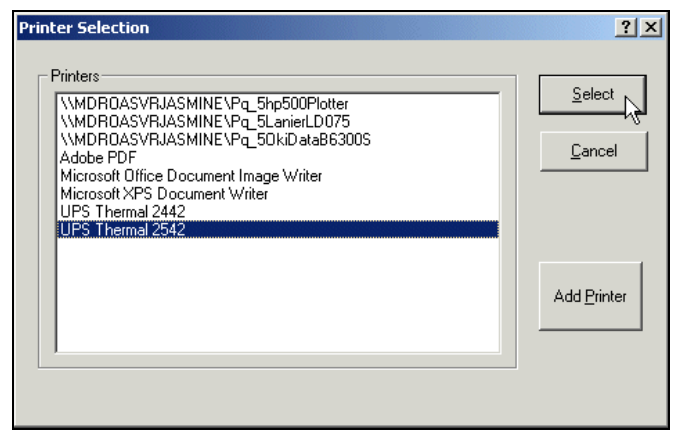


# WorldShip® Install a Thermal Label Printer



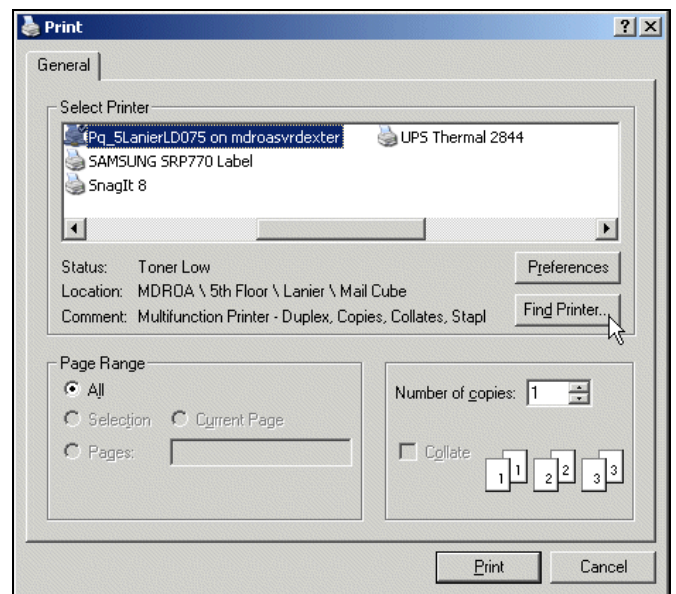
10. When the installation process is complete, the Printer Selection window appears with the newly installed printer highlighted.

- Click the Select button.
- Continue with step 13.



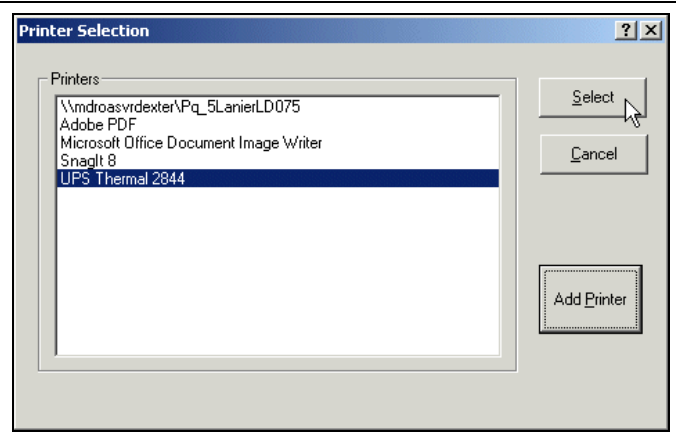
11. If you selected Other in the Printer Type Selection window (step 5), the Print window appears and provides a list of the printers that are connected to your computer, including network printers.

- If the desired printer appears in the Select Printer box, select the printer and click the Print button.
- If the desired printer does not appear in the Select Printer box, click the Find Printer button and navigate to and select the desired printer.
- Continue with step 12.



12. The Printer Selection window appears.

- Select the desired printer in the Printers box.
- Click the Select button.



# WorldShip® Install a Thermal Label Printer



13. The Label Printer Setup window appears.

- Verify the printer name in the Name box.
- Click the Apply button.

**Note:** For information on setting your label stock configuration, see the Set the Label Stock Configuration document.

