

# UPS WorldShip™ 2009 Version 11.0 Import Shipment Data Using the Sample Order Import 1 Map



This document explains how to import shipment information in a .csv (comma-separated value) file format using the Sample Order Import 1 map provided with WorldShip. To complete this example, you need the fields listed under WorldShip.csv Fields in your .csv file mapped with the field names as listed below. (Do not include spaces between text in a field name.)

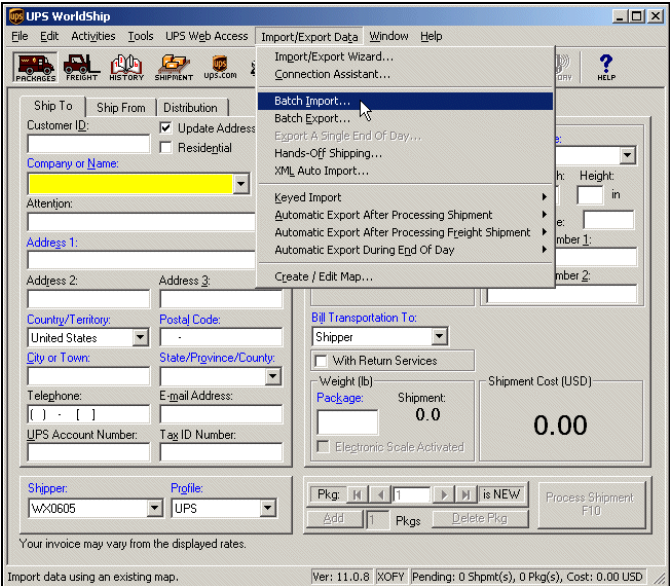
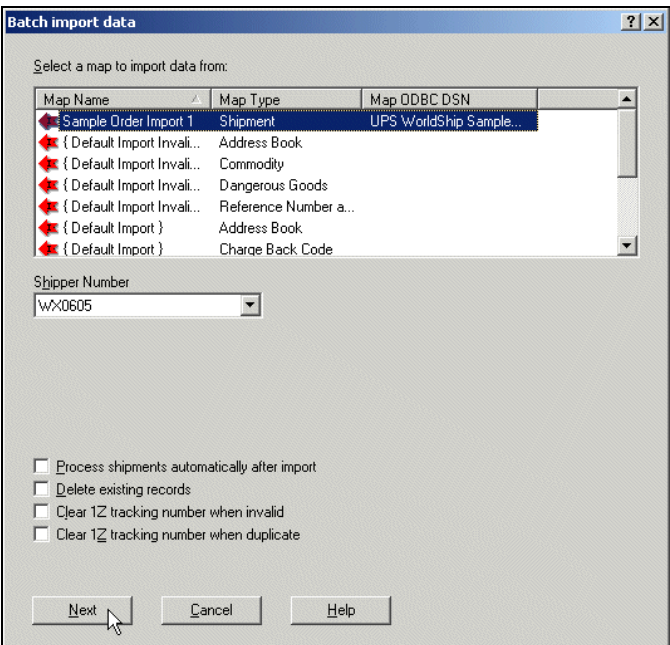
Place the .csv in the \UPS\WSTD\ImpExp\AcctPkgs\Sample Order Import 1 folder, and name your file worldship.csv.

WorldShip.csv Fields	WorldShip Fields
ORDERID	Ship To: Customer ID
SHIPMENTINFORMATION_SERVICETYPE	Shipment Information: Service Type
SHIPMENTINFORMATION_BILLINGOPTION	Shipment Information: Billing Option
SHIPMENTINFORMATION_QVNOPTION	Shipment Information: QVN Option
SHIPMENTINFORMATION_QVNSHIPNOTIFICATION1OPTION	Shipment Information: QVN Ship Notification 1 Option
SHIPMENTINFORMATION_NOTIFICATIONRECIPIENT1TYPE	Shipment Information: Notification Recipient 1 Type
SHIPMENTINFORMATION_NOTIFICATIONRECIPIENT1FAXO REMAIL	Shipment Information: Notification Recipient 1 Email
SHIPTO_COMPANYORNAME	Ship To: Country or Name
SHIPTO_STREETADDRESS	Ship To: Address 1
SHIPTO_ROOMFLOORADDRESS2	Ship To: Address 2
SHIPTO_CITY	Ship To: City or Town
SHIPTO_STATE	Ship To: State/Province/Country
SHIPTO_COUNTRY	Ship To: Country/Territory
SHIPTO_ZIPCODE	Ship To: Postal Code
SHIPTO_TELEPHONE	Ship To: Telephone
SHIPTO_RESIDENTIALINDICATOR	Ship To: Residential Indicator
PACKAGE_PACKAGETYPE	Package: Package Type
PACKAGE_WEIGHT	Package: Weight
PACKAGE_REFERENCE1	Package: Reference 1
PACKAGE_REFERENCE2	Package: Reference 2
PACKAGE_REFERENCE3	Package: Reference 3
PACKAGE_REFERENCE4	Package: Reference 4
PACKAGE_REFERENCE5	Package: Reference 5
PACKAGE_DECLAREDVALUEOPTION	Package: Declared Value Option
PACKAGE_DECLAREDVALUEAMOUNT	Package: Declared Value Amount
SHIPTO_LOCATIONID	Ship To: Location ID

# UPS WorldShip™ 2009 Version 11.0 Import Shipment Data Using the Sample Order Import 1 Map



To import shipments using the Sample Order Import 1 map:

Step	Window (if available)
<p>1. On the Import/Export Data menu, click Batch Import.</p> <p><b>Note:</b> You can also use the Sample Order Import 1 map to complete a Keyed Import, which uses a single record to import from the WorldShip.csv file by a key field (such as, Customer ID). The key field uniquely identifies a particular order to import. When using Keyed Import, WorldShip prompts you to enter the key for the order in which you would like to import.</p>	
<p>2. The Batch Import Data window appears.</p> <ul style="list-style-type: none"> <li>• Select Sample Order Import 1.</li> <li>• Click the Next button.</li> </ul> <p><b>Note:</b> This window also provides the Process Shipments Automatically After Import option. This option requires that all information (such as, Weight or Service) needed to complete the shipment appear in the data being imported.</p>	

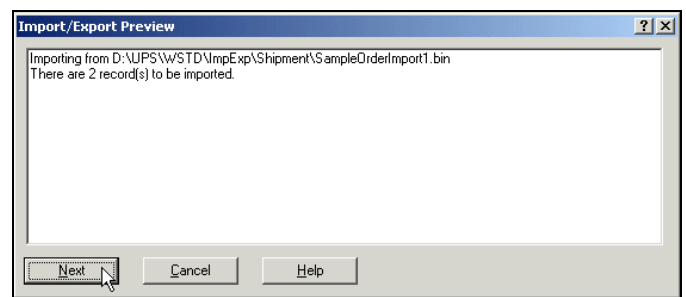
# UPS WorldShip™ 2009 Version 11.0

## Import Shipment Data Using the Sample Order Import 1 Map



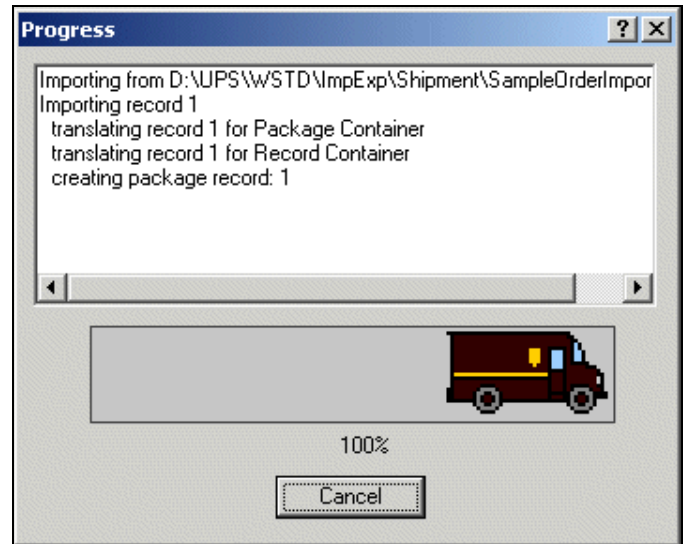
3. The Import/Export Preview window appears and shows the total number of records that appear in your WorldShip.csv file.

Click the Next button.



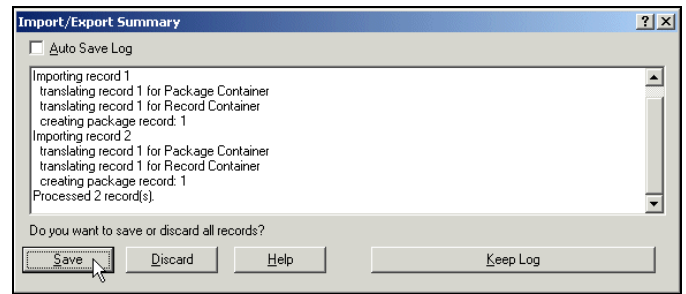
4. The Progress window appears and shows the progress of your import.

No action is required.



5. When the import completes, the Import/Export Summary window appears and shows a summary of the import process.

Click the Save button.



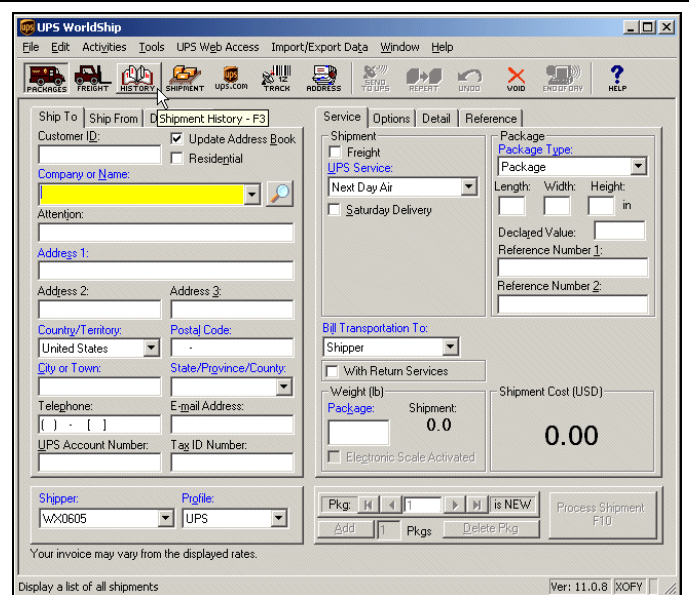
# UPS WorldShip™ 2009 Version 11.0 Import Shipment Data Using the Sample Order Import 1 Map



6. The Shipping window appears.

Click Shipment History on the Windows menu or

click the  button.



7. The Shipment History window appears.

- Open the Imported Shipments folder to view the imported shipments.
- Process the imported shipments.

