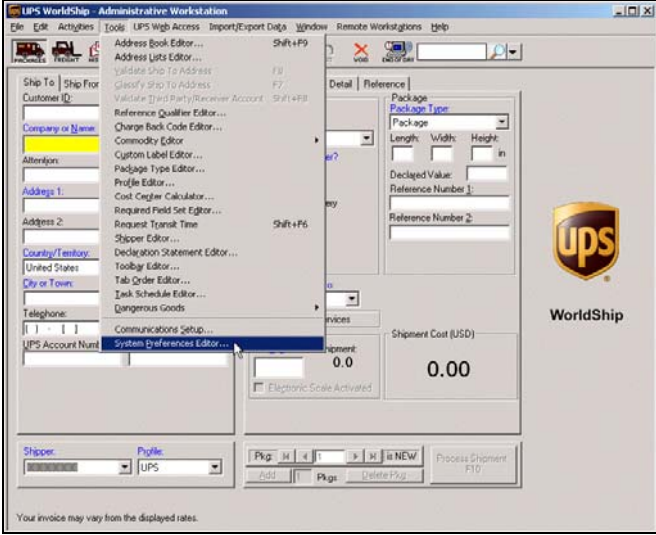
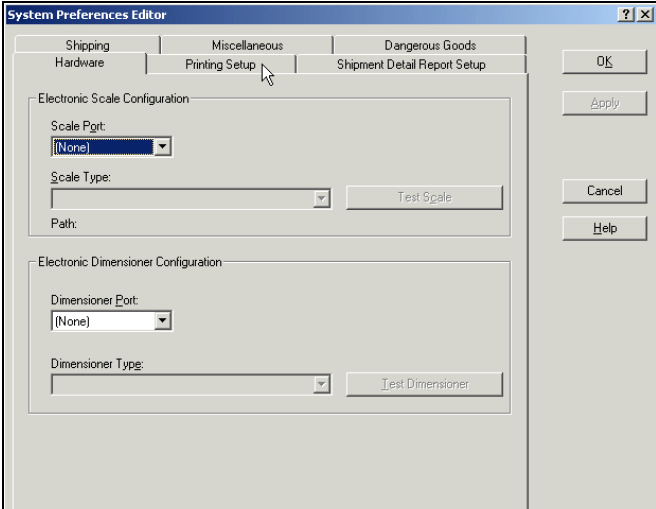


WorldShip®

Set the Label Stock Configuration



To set the label stock configuration:

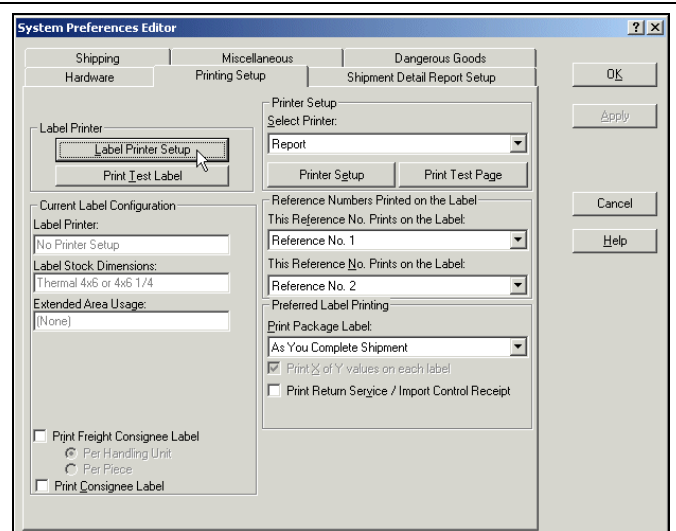
Step	Window (if available)
<p>1. On the Tools menu, click System Preferences Editor.</p>	
<p>2. The System Preferences Editor window appears. Click the Printing Setup tab.</p>	

WorldShip®

Set the Label Stock Configuration



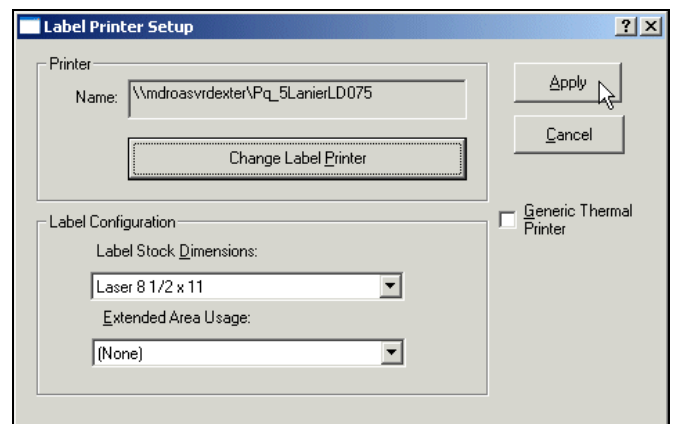
- The Printing Setup tab appears.
Click the Label Printer Setup button.



- The Label Printer Setup window appears.
 - Under Printer, verify that the correct printer appears in the Name box.

Note: The correct printer name must appear before continuing. To select or add a different printer, see the instructions in the Install a Thermal Label Printer document.
 - Under Label Configuration, click the down arrow in the Label Stock Dimensions box and select the desired label stock dimension (see definitions under Notes).
 - Click the down arrow in the Extended Area Usage box and select the desired extended area usage (see definitions under Notes).

Tip: The Extended Area Usage box is active only if you select Thermal 4x8 or 4x8¼, Laser 8½ x 11, and Laser 8½ x 11 (2 Labels per Page) in the Label Stock Dimensions box.
 - Click the Apply button.



WorldShip®

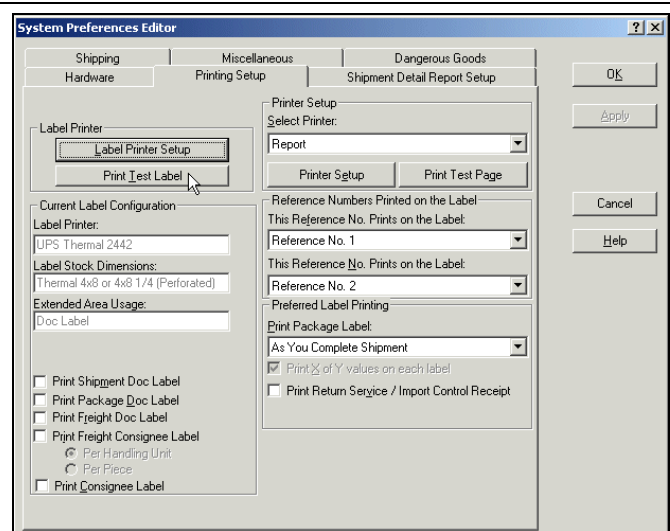
Set the Label Stock Configuration



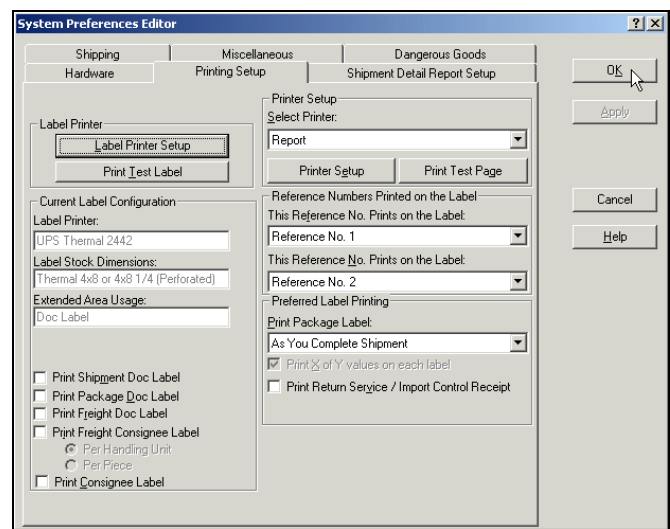
5. The Printing Setup tab in the System Preferences Editor window appears again.

On the Printing Setup tab:

- Under Current Label Configuration, verify that Label Printer shows your printer, Label Stock Dimensions shows the desired dimension, and Extended Area Usage shows the correct usage.
- If the label stock dimension is Thermal 4x8 (Perforated), select the Print Shipment Doc Label, Print Package Doc Label, Print Freight Doc Label, Print Freight Consignee Label, and Print Consignee Label check boxes as needed.
- Click the down arrow in each This Reference No. Prints on the Label box and select a reference number to appear on the label.
- Under Preferred Label Printing, click the down arrow in the Print Package Label box and select when you want to print the package labels and then select the Print X of Y Values on each Label and the Print Return Service Receipt check boxes as needed.
- Click the Print Test Label button to make sure your printer is correctly set up. If the label does not print correctly, recheck your configuration.



6. Once you are satisfied with your label printing configuration, click the OK button.



WorldShip®

Set the Label Stock Configuration



Notes:

- The following label stock dimensions are available:
 - ✓ **Thermal 4x6 or 4x6¼** – Use this size to print standard labels.
 - ✓ **Thermal 4x8 (Perforated)** – Use this size to print document labels.
 - ✓ **Thermal 4x8¼ (Perforated)** – Use this size to print document labels with Warsaw text, which will appear on the address label portion.
 - ✓ **Thermal 4x8 or 4x8¼** – Use this size if you want to use an extended area to customize your labels (see choices below).
 - ✓ **Thermal 4x11** – Use this size to print UPS World Ease™ labels.
 - ✓ **Laser 8½ x 11** – Use this size to print one label on each laser sheet. This stock size also permits you to use an extended area to customize your labels (see choices below).
 - ✓ **Laser 8½ x 11 (2 Labels per Page)** – Use this size to print the two labels on each laser sheet. For this dimension, you must select As You Complete Shipment for your preferred label printing option. This stock size also permits you to use the extended area to customize your labels (see choices below).
 - ✓ **Laser 8½ x 11 (4 Labels per Page)** – Use this size to print four labels on each laser sheet. For this dimension, you must select As You Complete Shipment for your preferred label printing option.
 - ✓ **Laser A4 210 x 297** – Use this size if you want to use an extended area to customize your labels with reference numbers or a generic barcode.
- The following extended area usages are available for Thermal 4x8 and 4x8¼:
 - ✓ **(None)** to print nothing in the extended area of the label.
 - ✓ **Generic Barcode** to print a customized reference number barcode in the lower 2-inch area of the label.
 - ✓ **Preprinted Label Stock** to use your own label stock with a preprinted company logo in the top 2-inch area of the label.
 - ✓ **SSCC-18 Barcode** to print in the lower 2-inch area of the label.
 - ✓ **Graphical Image (Company Logo)** to use your own graphical image in the top 2-inch area of the label.
 - ✓ **Reference Numbers** to print one to five reference numbers in the lower 2-inch area of the labels.
- The following extended area usages are available for Laser 8½ x 11 and Laser 8½ x 11 (2 Labels per Page):
 - ✓ **(None)** to print nothing in the extended area of the labels.
 - ✓ **Reference Numbers** to print one to five reference numbers in the lower 2-inch area of the labels.
 - ✓ **Generic Barcode** to print a customized reference number barcode in the lower 2-inch area of the label.
- The following extended area usages are available for Laser A4 210 x 297:
 - ✓ **(None)** to print nothing in the extended area of the labels.
 - ✓ **Reference Numbers** to print one to five reference numbers in the lower 2-inch area of the labels.
 - ✓ **Generic Barcode** to print a customized reference number barcode in the lower 2-inch area of the label.