



PRE-INSTALLATION INSTRUCTIONS:

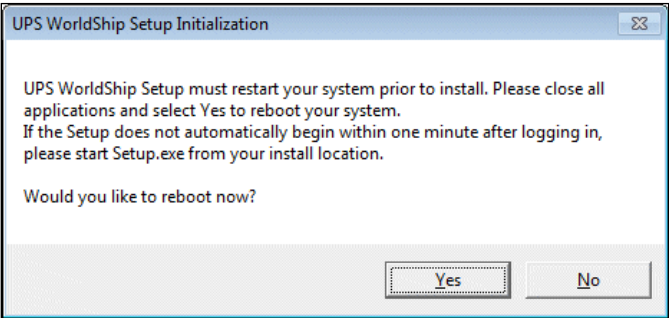
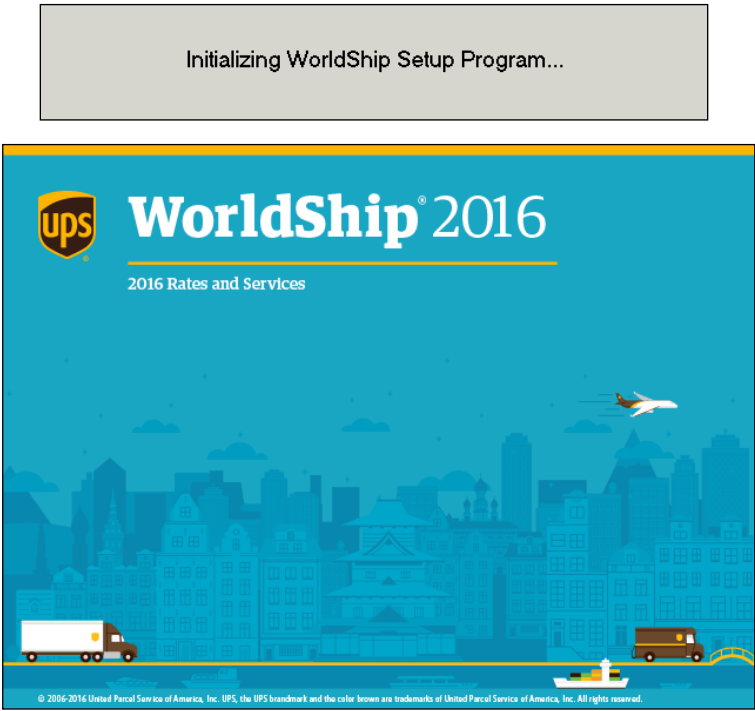
- This document discusses using the WorldShip DVD to install WorldShip. You can also install WorldShip from the web. Go to the following web page and click on the appropriate download link:
https://www.ups.com/content/us/en/bussol/offering/worldship_download.html
- Install WorldShip on the Workgroup Admin before installing it on the Workgroup Remote.
- Temporarily disable any virus scan software that you may have installed and do not perform any other installations while WorldShip installs.
- For a Workgroup Admin installation:
 - Create a folder in which to install the shared database and Workgroup Remote installation files. This folder must be a shared Microsoft® folder and can reside on either the Workgroup Admin or on any other drive accessible from both the Workgroup Admin and Workgroup Remote.
 - Install the “local” files and the “remote” files in different folders.
- For a Workgroup Remote installation:
 - Request access to the network share drive created by the Workgroup Admin.
 - Map a drive to the folder containing the shared files. Using Microsoft® Windows Explorer, select Map Network Drive from the Tools menu.
- If you are going to move WorldShip data from another Single workstation to this Single workstation during installation, you must do the following on the other Single workstation:
 - On the Manage Data menu in WorldShip, click **Move WorldShip Data to Another Computer**.
 - In the Move WorldShip Data Instructions window, click **Back-up** to make a copy of your data.
Note: Be sure to record the location of the folder where your data will be saved. This location will be needed during the installation of WorldShip on this computer.

INSTALLATION INSTRUCTIONS:

Follow these steps to install WorldShip on a Single Workstation or Workgroup Admin Workstation from the WorldShip DVD or to install WorldShip on a Workgroup Remote Workstation from a network share drive or the WorldShip DVD:

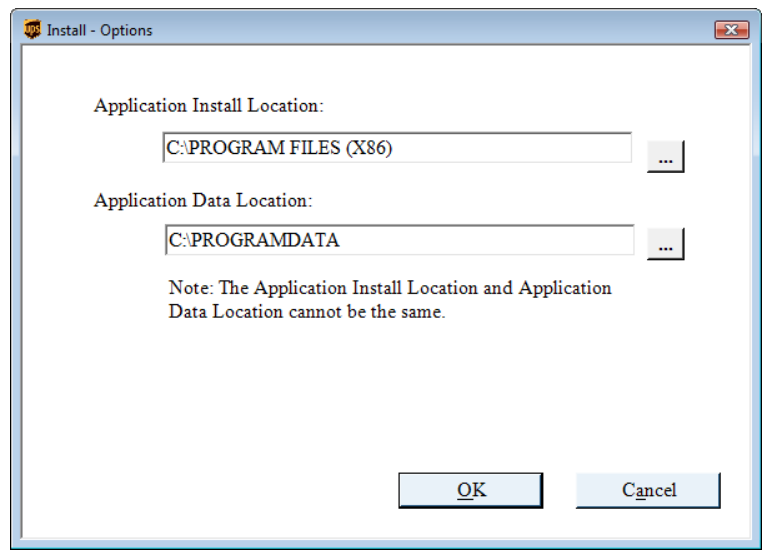
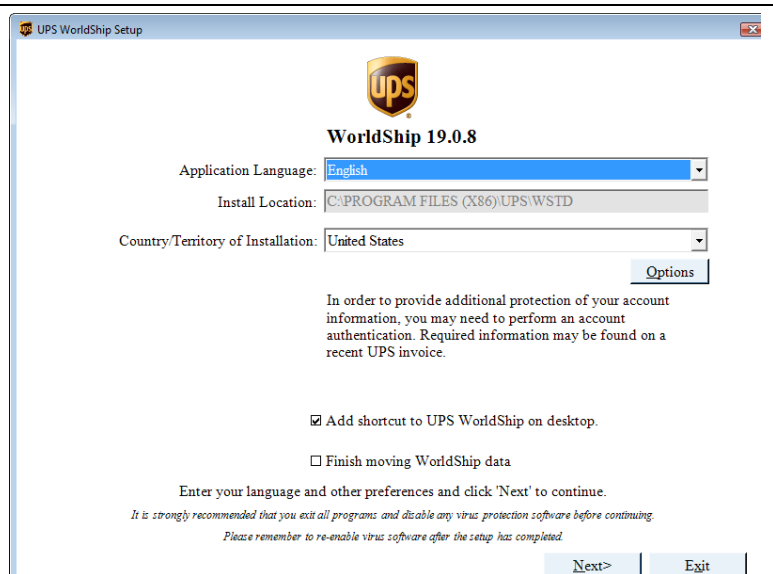
Step	Window (if available)
1. Insert the WorldShip DVD into the drive. The installation should begin automatically. If not, use Microsoft Explorer to navigate to the DVD drive and double-click Setup.exe. If installing on a Workgroup Remote Workstation from a network share drive, browse to and double-click \UPS\WSTD\Remote\Install\Disk1\ Setup.exe.	None



<p>2. The UPS WorldShip Set-up Initialisation window appears and asks if you want to reboot now.</p> <ul style="list-style-type: none">• Click Yes.	
<p>3. Your workstation reboots. Log in and enter your password as needed.</p>	<p>None</p>
<p>4. The Initialising WorldShip Set-up Program message appears and then the WorldShip splash screen appears.</p>	

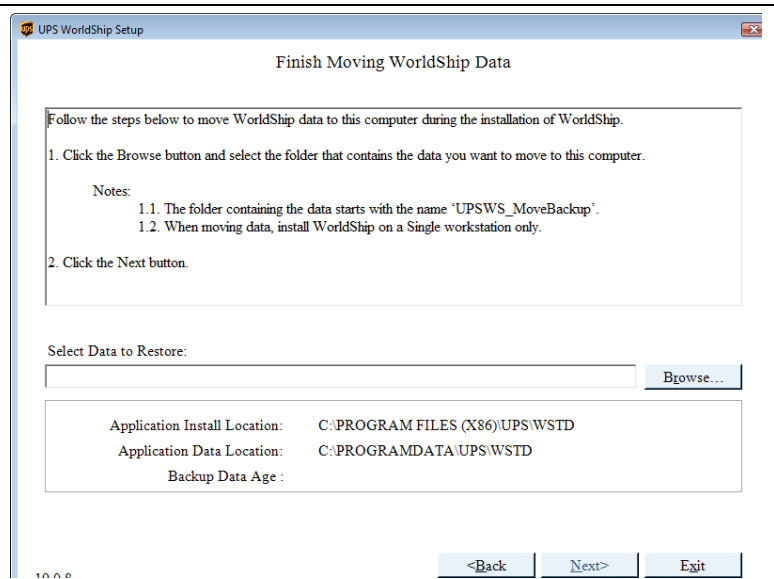


5. The **UPS WorldShip Set-up** window appears.
- Click the **Application Language** down arrow and select the desired application language.
- Note:** You can install WorldShip using any language that is supported by your Operating System.
- Click **Options** and browse to and select the two locations where you want to install WorldShip. WorldShip will create the \UPS\WSTD folders under the locations you choose.
 - Click the **Country/Territory of Installation** down arrow and select the desired country/territory.
 - Select or clear the **Add Shortcut to UPS WorldShip on Desktop** check box as needed.
 - Select or clear the **Finish Moving WorldShip Data** check box as needed (see below).
 - Click **Next**.
 - If you selected the **Finish Moving WorldShip Data** check box, continue with step 6. If you cleared the **Finish Moving WorldShip Data** check box, skip to step 7.

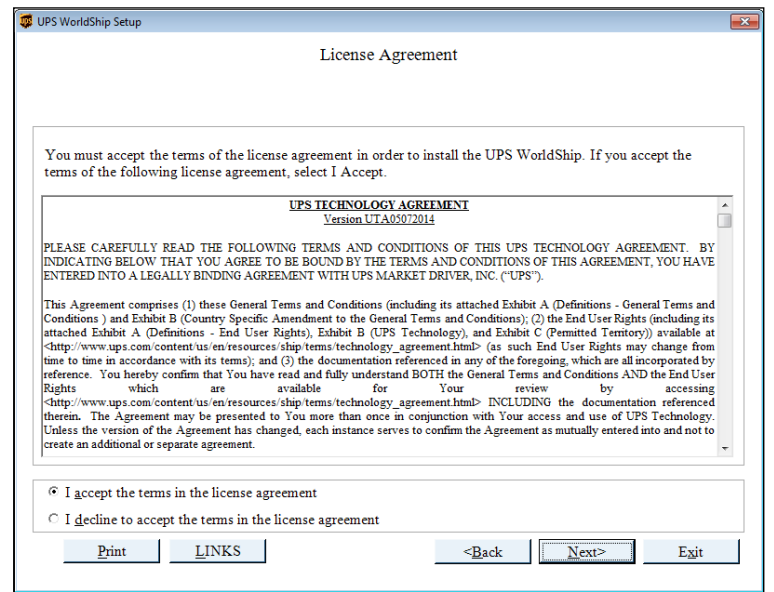




6. The **Finish Moving WorldShip Data** window appears.
- Click **Browse**.
 - In the **Browse For Folder** window, navigate to and select the **UPSWS_MoveBackup** folder that contains the data you want to move to this computer and click **OK**.
 - Click **Next**.

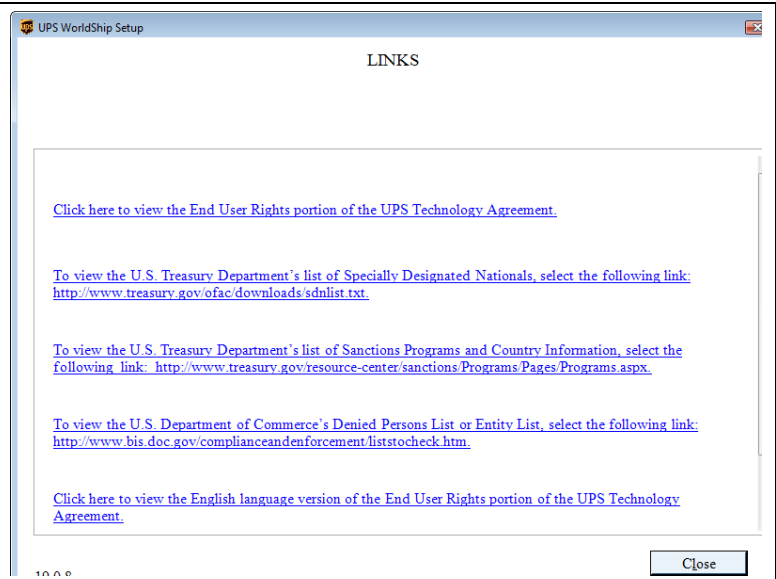


7. The **Licence Agreement** window appears.
- If you would like to visit various websites for pertinent United States regulations, End User Rights and UPS Privacy Policy, click **LINKS** and continue with step 8.
 - If not, skip to step 9.

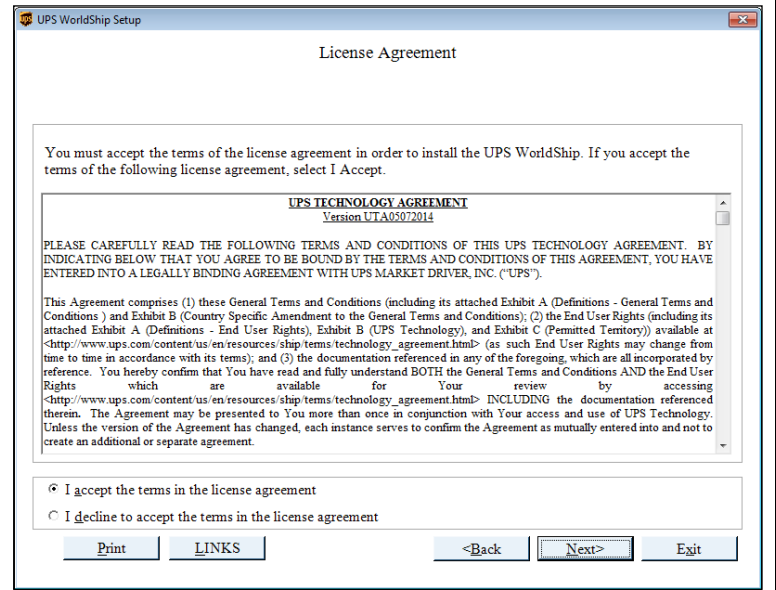




8. The **LINKS** window appears.
- Click on the link of your choice.
 - When you have finished, click **Close**.



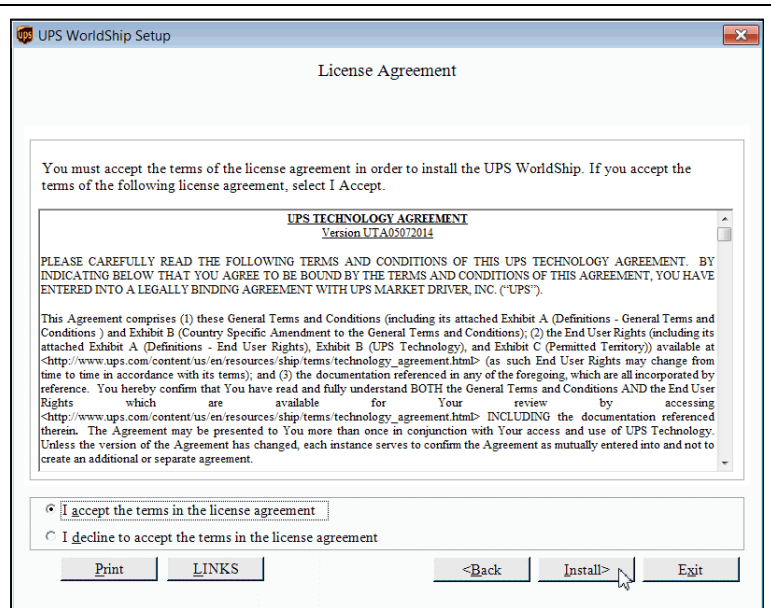
9. The **Licence Agreement** window appears.
- Click **Print** to print the Licence Agreement.
 - Review the agreement.
 - **Select I Accept the Terms in the Licence Agreement.**
- Note:** If you select **I Decline to Accept the Terms in the Licence Agreement**, the installation exits.
- Click **Next**.





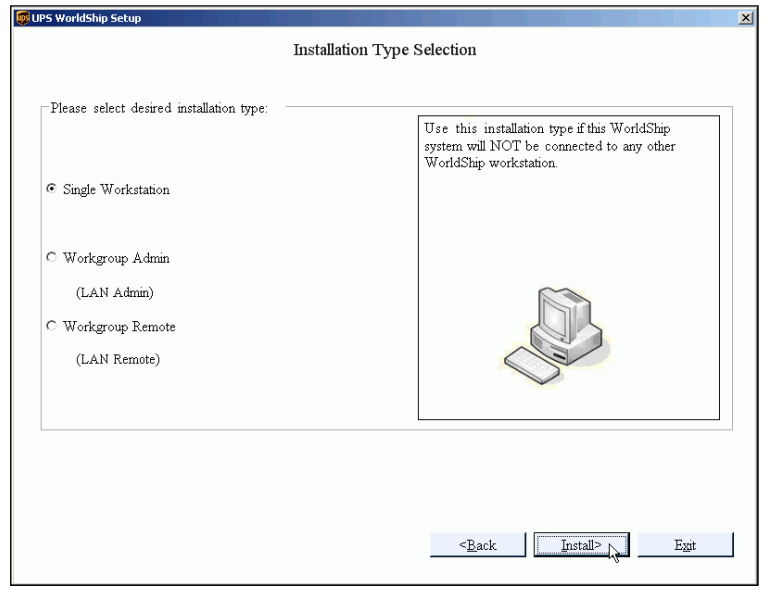
Note: If you have selected the **Finish Moving WorldShip Data** check box, the **Next** button changes to the **Install** button.

- Click **Install** and skip to step 11.



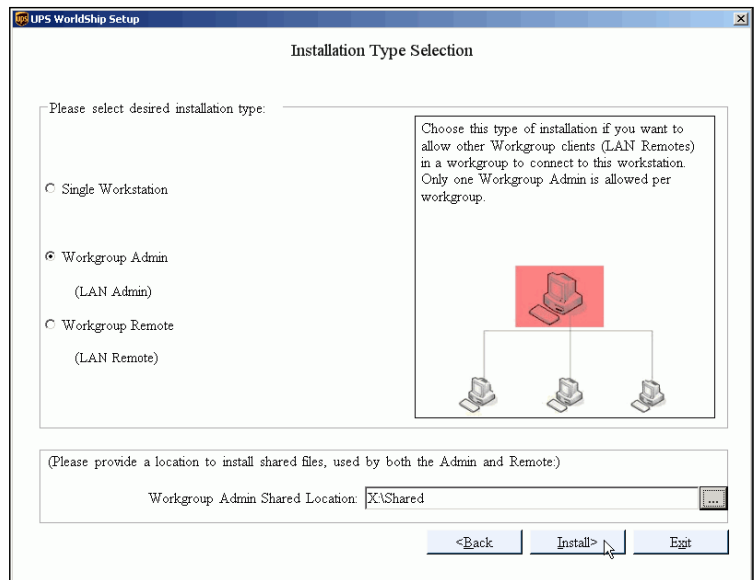
10. The **Installation Type Selection** window appears.

- Select **Single Workstation**, **Workgroup Admin** or **Workgroup Remote**.
- If you select **Single Workstation**, click **Install**.

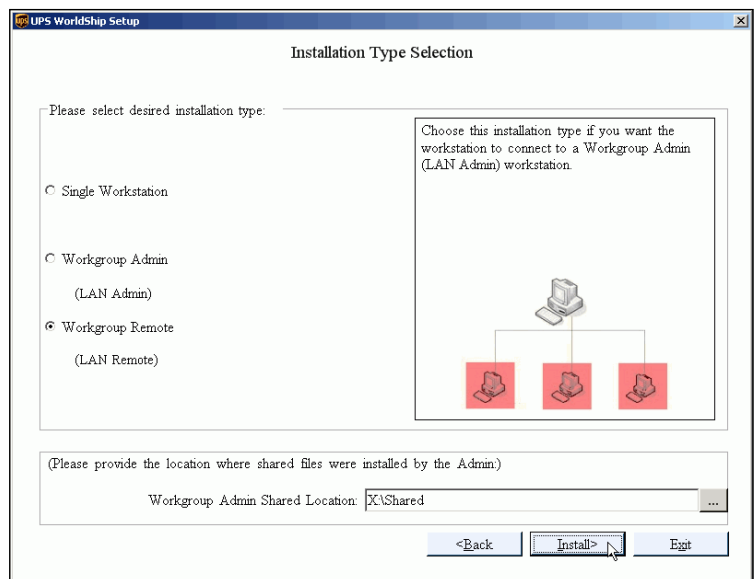




- If you select **Workgroup Admin**:
 - Click the **Workgroup Admin Shared Location Browse [...]** button and browse to and select the location to install the shared files used by both the Workgroup Admin and Workgroup Remote.
 - Click **Install**.



- If you select **Workgroup Remote**:
 - If installing from a network shared drive, the **Workgroup Admin Shared Location** cannot be changed.
 - If installing from the WorldShip DVD, type the **Workgroup Admin Shared Location** or click [...] and browse to and select the directory of the network shared drive. (Your Workgroup Administrator should provide this information.)
 - Click **Install**.

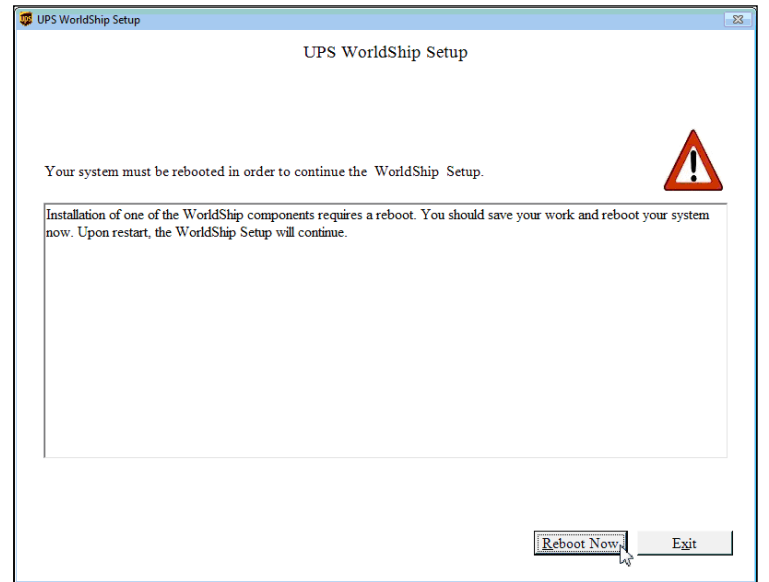
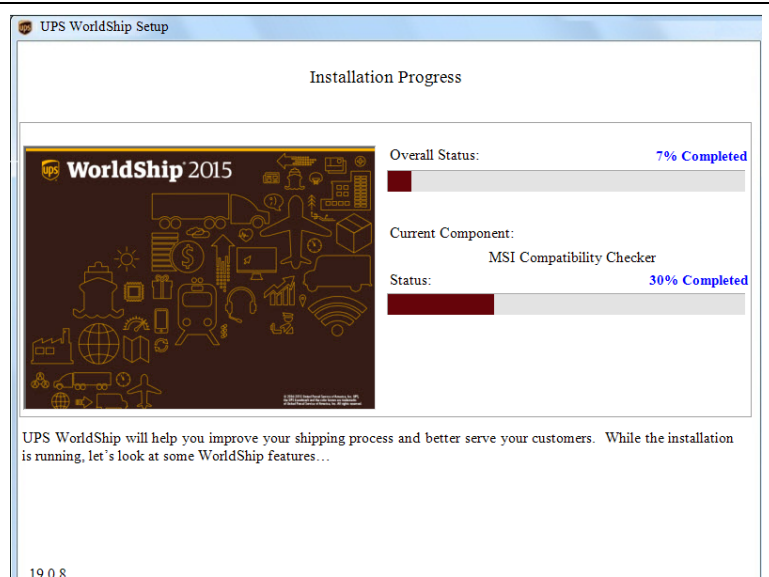




11. During installation, the **Installation Progress** window appears.

Monitor the progress of the installation.

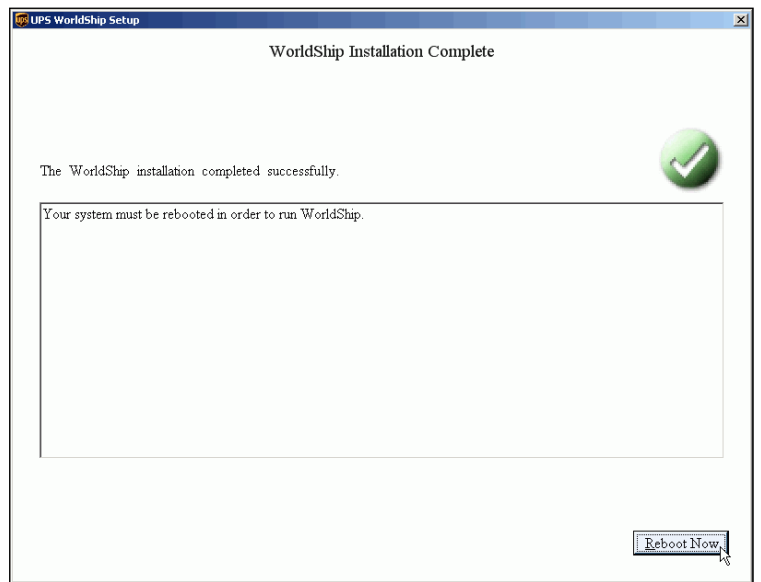
Note: Do not attempt to restart your workstation during installation, however, if you are asked to reboot during the installation, please reboot and log in and enter your password as required to continue installation.





12. When installation completes, the **WorldShip Installation Complete** window appears.

- Click **Reboot Now**.

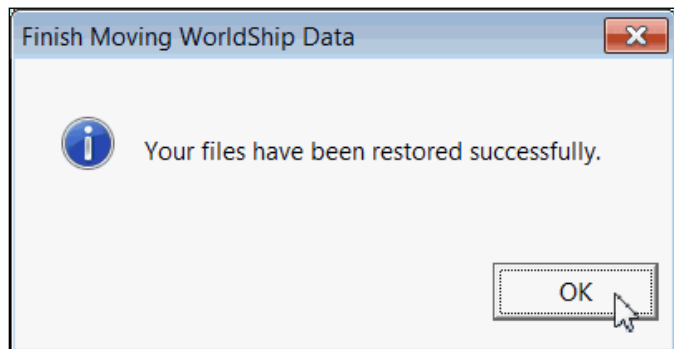
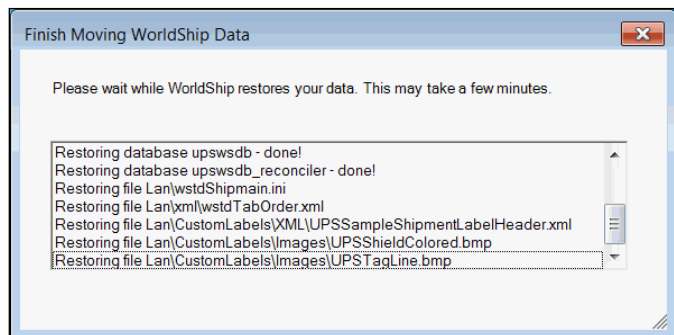


13. Your workstation reboots. Log in and enter your password as needed.

None

14. If you selected the **Finish Moving WorldShip Data** check box, the Finish Moving WorldShip Data window shows the progress as the files are moved from the other Single workstation to this Single workstation.

- When the files have been moved successfully, a message appears.
- Click **OK**.



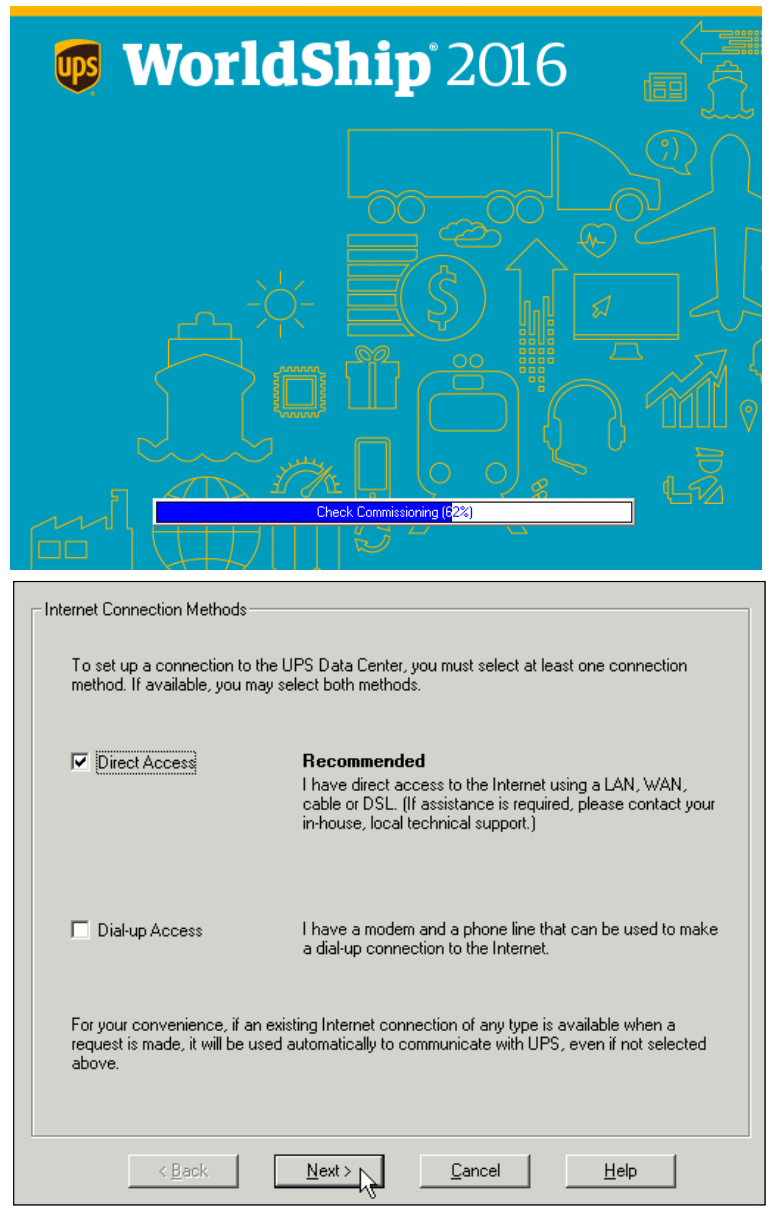


15. WorldShip starts. During start up, the progress appears on **the WorldShip splash screen**, and the **Communication Set-up** windows appear so you can set up your communications.

Note: The Communication Set-up windows do not appear on Remote Workgroup workstations.

- Complete the required information on each window.

- Click **Next** on the first two windows and **Finish** on the third window (see next page).





Direct Access Setup

Connect through a proxy server

Proxy Information

Address: Port:

My proxy server requires Authorization information

Authorization

User ID:

Password:

Save Password

By continuing or clicking the 'Test' button, Communication Setup may test your network to determine if the above settings are valid.

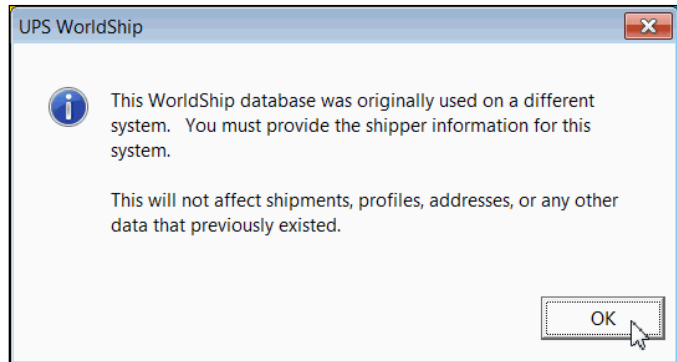
Internet Connection Methods Summary

Direct Access	Enabled
Not using a proxy server.	Tested successfully.
Dial-up Access	Disabled



16. If you selected the **Finish Moving WorldShip Data** check box, an informational message appears.

- Review the message.
- Click **OK**.

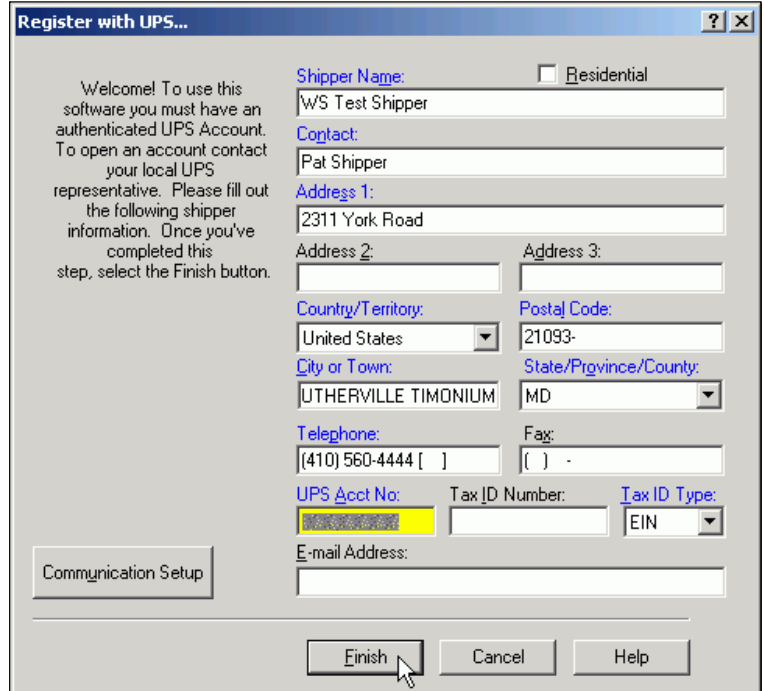


17. Also during start up, the **Register with UPS** window appears so you can commission your installation.

- Complete the required information.
- Click **Finish**.

Notes:

- If you selected the **Finish Moving WorldShip Data** check box, the **Register with UPS** window is pre-filled with the information from the other computer and is read-only.
- Using the **Shipper Editor**, you will be able to change the following fields after registration: Shipper Name, Contact, Address 3, Telephone, Fax, Tax ID Number, Tax ID Type and E-mail Address.





18. The **Shipping** window appears and then the **UPS WorldShip Help** window appears.

- If you are installing a Workgroup Admin workstation, enable remote access by selecting the **Tools** tab, **Remote Workstations** and then **Enable/Disable Remote Access**. (This option is not shown on Single workstations.)
- Review the help or begin processing shipments.

For further information on using WorldShip 2016, see the *WorldShip 2016 User Guides* (<https://www.ups.com/worldshipsupport>).

